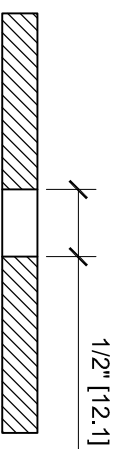
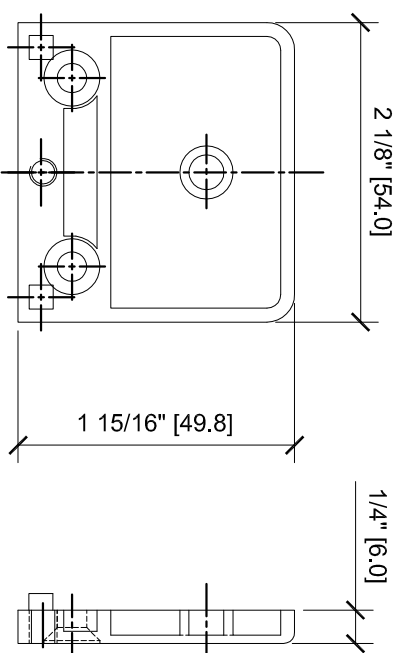
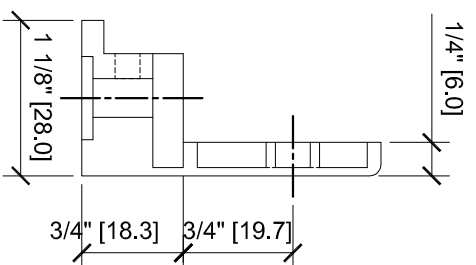
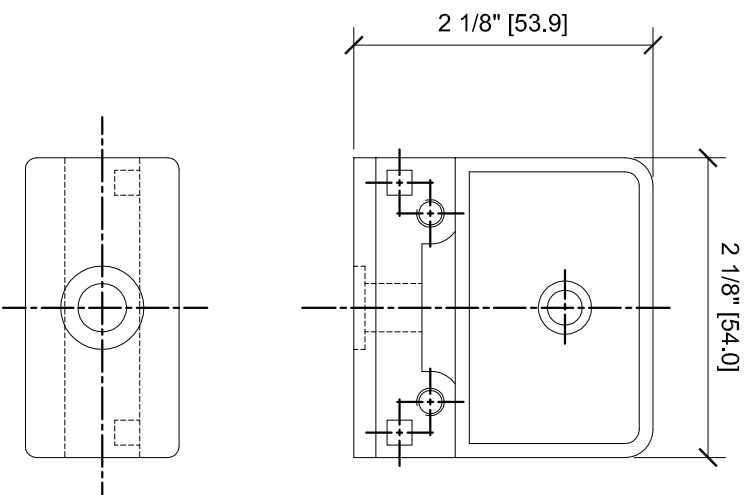
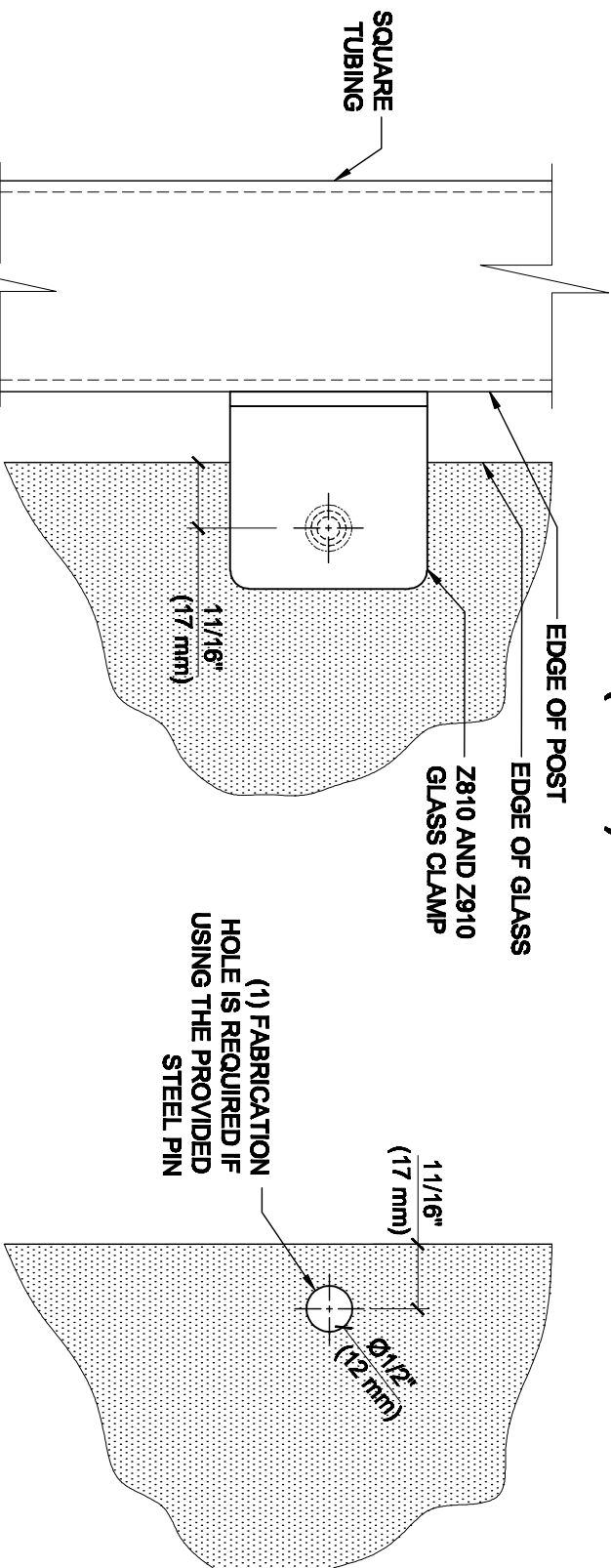


Z-SERIES SQUARE TYPE  
FLAT BASE ZINC CLAMPS  
FOR 3/8" GLASS  
CAT NO. Z910XX



GLASS FABRICATION

# GLASS FABRICATION TEMPLATE FOR THE Z-SERIES SQUARE TYPE FLAT BASE CLAMPS FOR 3/8" (10 mm) GLASS



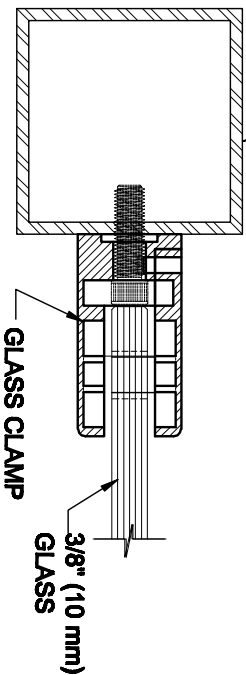
SQUARE TUBING

3/4" (19 mm)

CRL'S STANDARD RECOMMENDED  
(GLASS GAP ) BETWEEN POST AND  
EDGE OF GLASS

GLASS FABRICATION  
TEMPLATE USED FOR:

CATALOG NUMBER
Z810BR
Z810CH
Z810SC
Z810BN
Z810GP
Z810W
Z910BS
Z910PS



## SPECIFICATIONS:

GLASS THICKNESS: MODELS FOR 3/8" (10 mm) GLASS.

BASE DESIGN: FLAT BACK

FOR USE WITH: SQUARE TUBING OR OTHER FLAT SURFACES.

MATERIAL: CHOICE OF ZINC CONSTRUCTED OR STAINLESS STEEL, STAINLESS STEEL, OR POWDER PAINTED ZINC CLAMPS ARE RECOMMENDED FOR MORE DURABILITY IN EXTERIOR APPLICATIONS.

GLASS FABRICATION: FOR 3/8" (10mm), THICK GLASS, 1/2" (12mm) DIAMETER HOLE REQUIRED IF USING PROVIDED STEEL PIN FOR GLASS SUPPORT

INCLUDES: RUBBER GASKETS AND STEEL PIN (FOR OPTIONAL USE) WITH GROMMET.

ALWAYS USE DIMENSIONS SHOWN ON THE PLAN.  
DO NOT SCALE OR DIMENSION ACTUAL DRAWING  
TO ENSURE ACCURACY



ARCHITECTURAL PRODUCTS  
Pht: 800-421-6144 Fx: 800-282-3286  
WWW.CRLAURENCE.COM

DESCRIPTION:  
Z-SERIES SQUARE TYPE FLAT BASE GLASS CLAMP  
FOR 3/8" (10 mm) THICK GLASS

CAT. NO: (SEE CHART)	DATE: 04/16/08
FILE NAME: Z810-Gls Fab	SCALE: N.T.S.
DRAWN BY: R.A.	CHECKED BY: C.H.
	SHT 1 OF 1