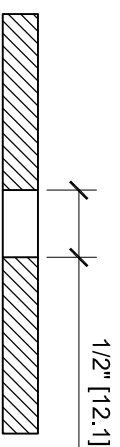
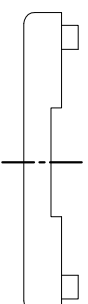
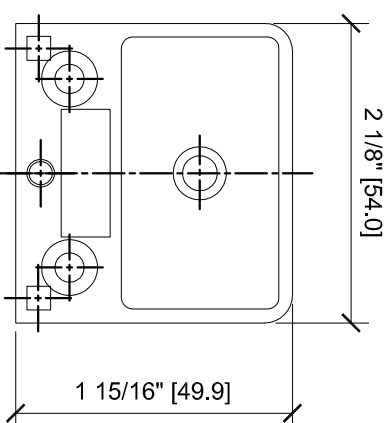
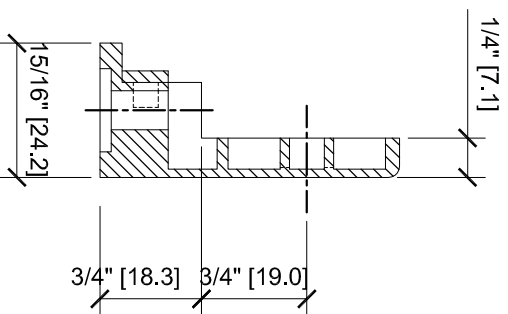
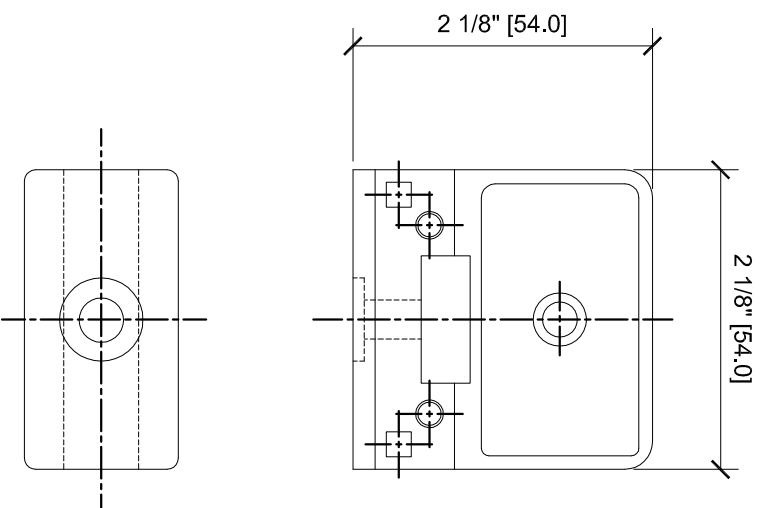
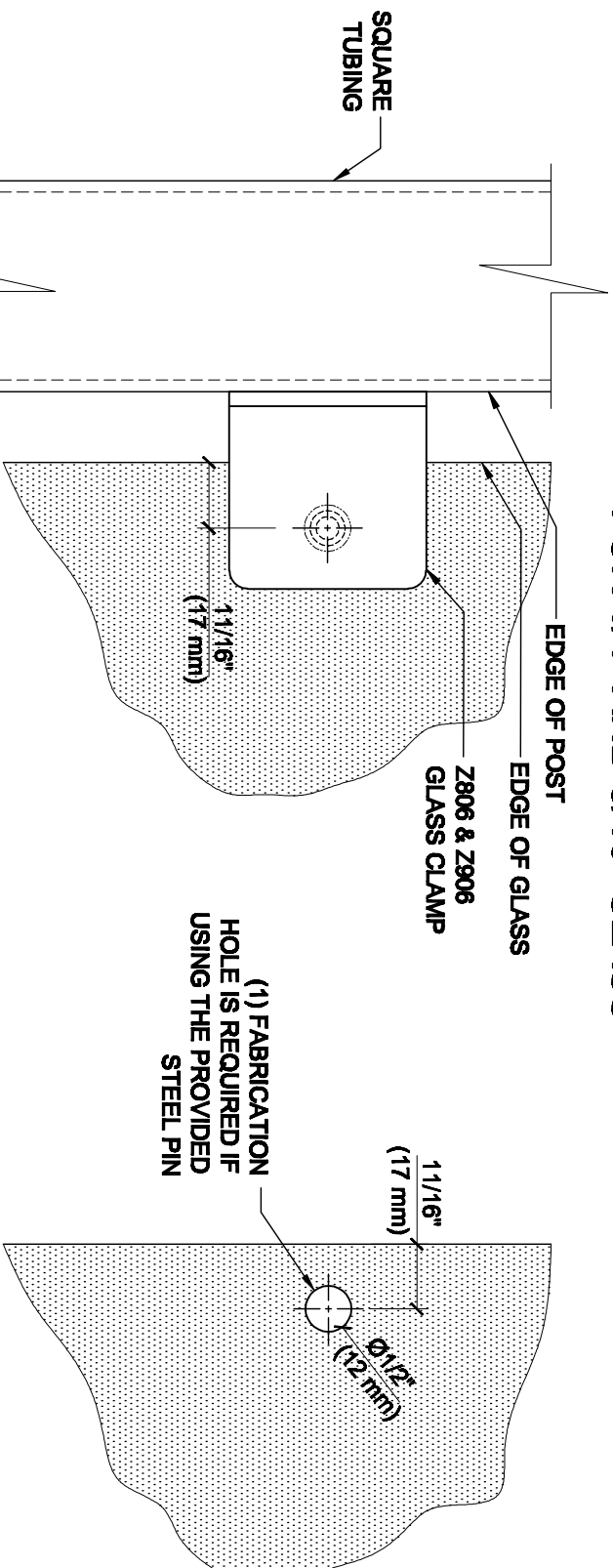


Z-SERIES SQUARE TYPE
FLAT BASE ZINC CLAMPS
FOR 1/4" AND 5/16" GLASS
CAT NO. Z906xx

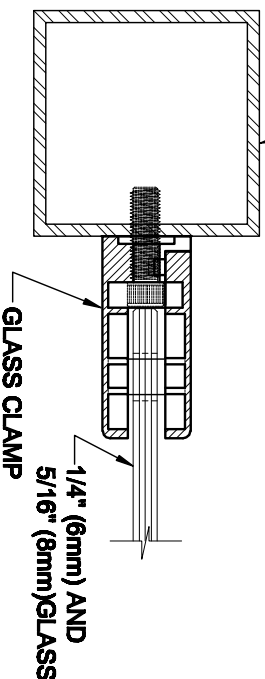


GLASS FABRICATION TEMPLATE FOR THE Z-SERIES SQUARE TYPE FLAT BASE CLAMPS FOR 1/4" AND 5/16" GLASS



SQUARE TUBING

CRL'S STANDARD RECOMMENDED (GLASS GAP) BETWEEN POST AND EDGE OF GLASS



ALWAYS USE DIMENSIONS SHOWN ON THE PLAN.
DO NOT SCALE OR DIMENSION ACTUAL DRAWING
TO ENSURE ACCURACY

SPECIFICATIONS:

GLASS THICKNESS: MODELS FOR 1/4" AND 5/16" (6 TO 8 mm) GLASS.

BASE DESIGN: FLAT BACK

FOR USE WITH: SQUARE TUBING OR OTHER FLAT SURFACES.

MATERIAL: CHOICE OF ZINC CONSTRUCTED OR STAINLESS STEEL, STAINLESS STEEL, OR POWDER PAINTED ZINC CLAMPS ARE RECOMMENDED FOR MORE DURABILITY IN EXTERIOR APPLICATIONS.

GLASS FABRICATION: FOR 1/4" (6 mm), 5/16" (8mm), THICK GLASS, 1/2" (12mm) DIAMETER HOLE REQUIRED IF USING PROVIDED STEEL PIN FOR GLASS SUPPORT

INCLUDES: RUBBER GASKETS AND STEEL PIN (FOR OPTIONAL USE) WITH GROMMET.

GLASS FABRICATION
TEMPLATE USED FOR:

CATALOG NUMBER
Z806BR
Z806CH
Z806SC
Z806BN
Z806GP
Z806W
Z906BS
Z906PS



ARCHITECTURAL PRODUCTS
Pht: 800-421-6144 Fx: 800-282-3286
WWW.CRLAURENCE.COM

DESCRIPTION:

Z-SERIES SQUARE TYPE FLAT BASE GLASS CLAMP

FOR 1/4" (6mm) & 5/16" (8mm) THICK GLASS

CAT. NO: (SEE CHART) DATE: 04/16/08

FILE NAME: Z806-Gls Feb SCALE: N.T.S.

DRAWN BY: R.A. CHECKED BY: C.H. SHT 1 OF 1