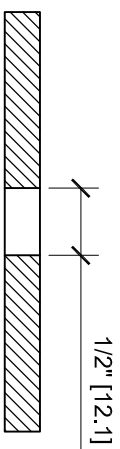
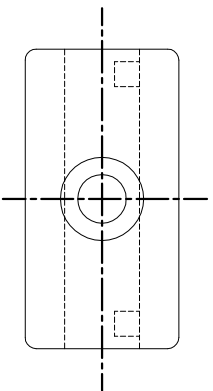
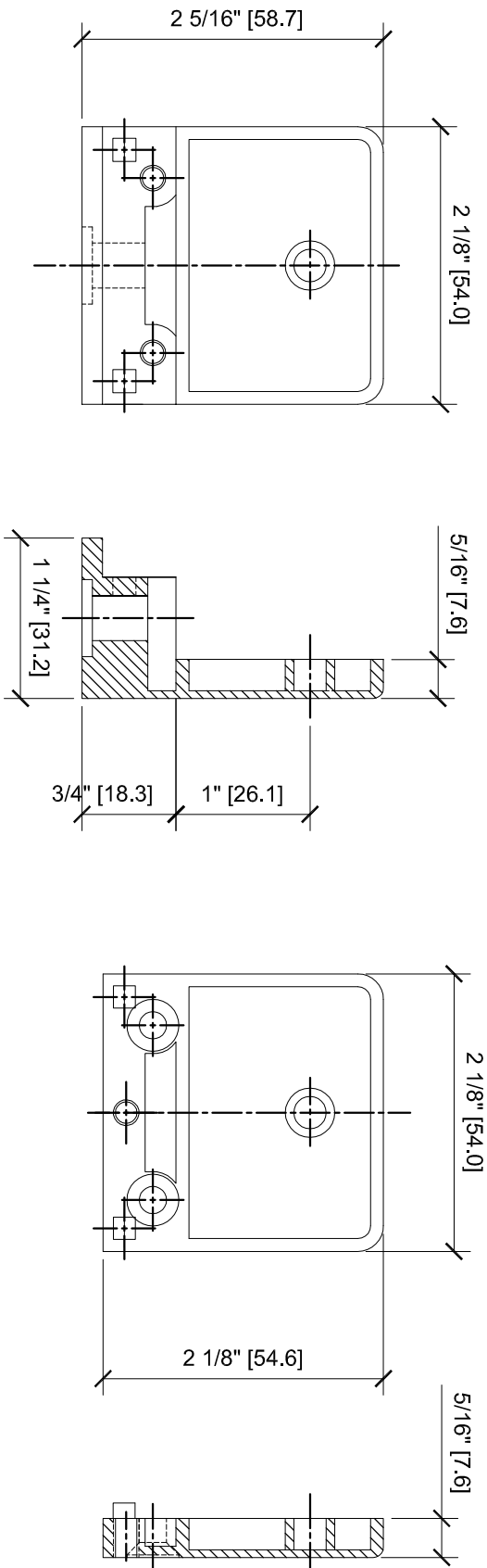
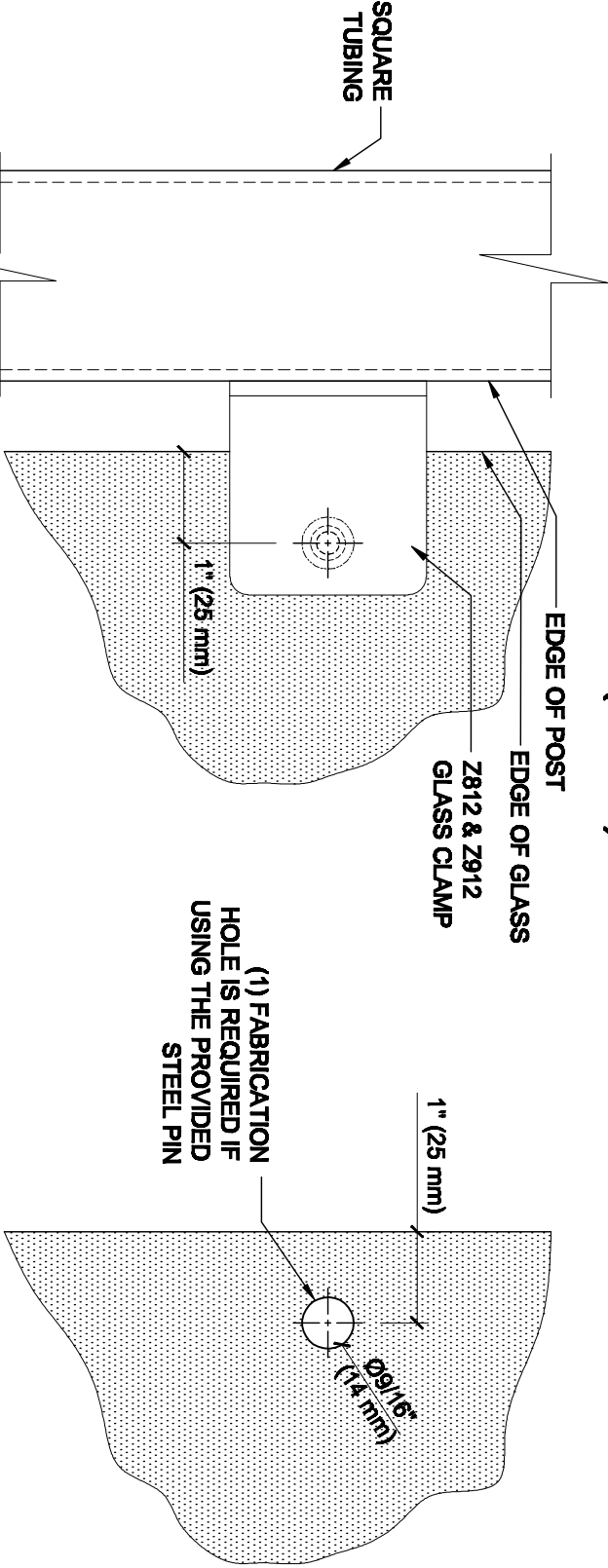


Z-SERIES SQUARE TYPE
FLAT BASE ZINC CLAMPS
FOR 1/2" GLASS
CAT NO. Z812XX



GLASS FABRICATION

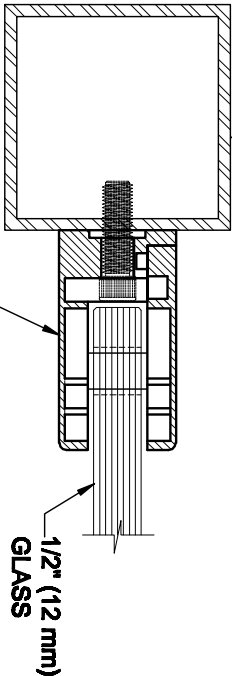
GLASS FABRICATION TEMPLATE FOR THE Z-SERIES SQUARE TYPE FLAT BASE CLAMPS FOR 1/2" (12 mm) GLASS



SQUARE TUBING

3/4" (19 mm)

CRL'S STANDARD RECOMMENDED (GLASS GAP) BETWEEN POST AND EDGE OF GLASS



ALWAYS USE DIMENSIONS SHOWN ON THE PLAN.
DO NOT SCALE OR DIMENSION ACTUAL DRAWING
TO ENSURE ACCURACY

SPECIFICATIONS:

- GLASS THICKNESS: MODELS FOR 1/2" (12 mm) GLASS.
- BASE DESIGN: FLAT BACK
- FOR USE WITH: SQUARE TUBING OR OTHER FLAT SURFACES.
- MATERIAL: CHOICE OF ZINC CONSTRUCTED OR STAINLESS STEEL, STAINLESS STEEL, OR POWDER PAINTED ZINC CLAMPS ARE RECOMMENDED FOR MORE DURABILITY IN EXTERIOR APPLICATIONS.
- GLASS FABRICATION: FOR 1/2" (12mm) THICK GLASS, USE 9/16" (14mm) DIAMETER HOLE REQUIRED IF USING PROVIDED STEEL PIN FOR GLASS SUPPORT
- INCLUDES: RUBBER GASKETS AND STEEL PIN (FOR OPTIONAL USE) WITH GROMMET.

GLASS FABRICATION
TEMPLATE USED FOR:

CATALOG NUMBER
Z812BR
Z812CH
Z812SC
Z812BN
Z812GP
Z812W
Z912BS
Z912PS

ARCHITECTURAL PRODUCTS PPT: 800-421-6144 FX: 800-282-3289 WWW.CRLAURENCE.COM	
DESCRIPTION:	Z-SERIES SQUARE TYPE FLAT BASE GLASS CLAMP FOR 1/2" (12 mm) THICK GLASS
CAT. NO. (SEE CHART)	DATE: 04/16/08
FILE NAME: Z812-G18 Feb	SCALE: N.T.S.
DRAWN BY: R.A.	CHECKED BY: C.H.
SHT 1 OF 1	