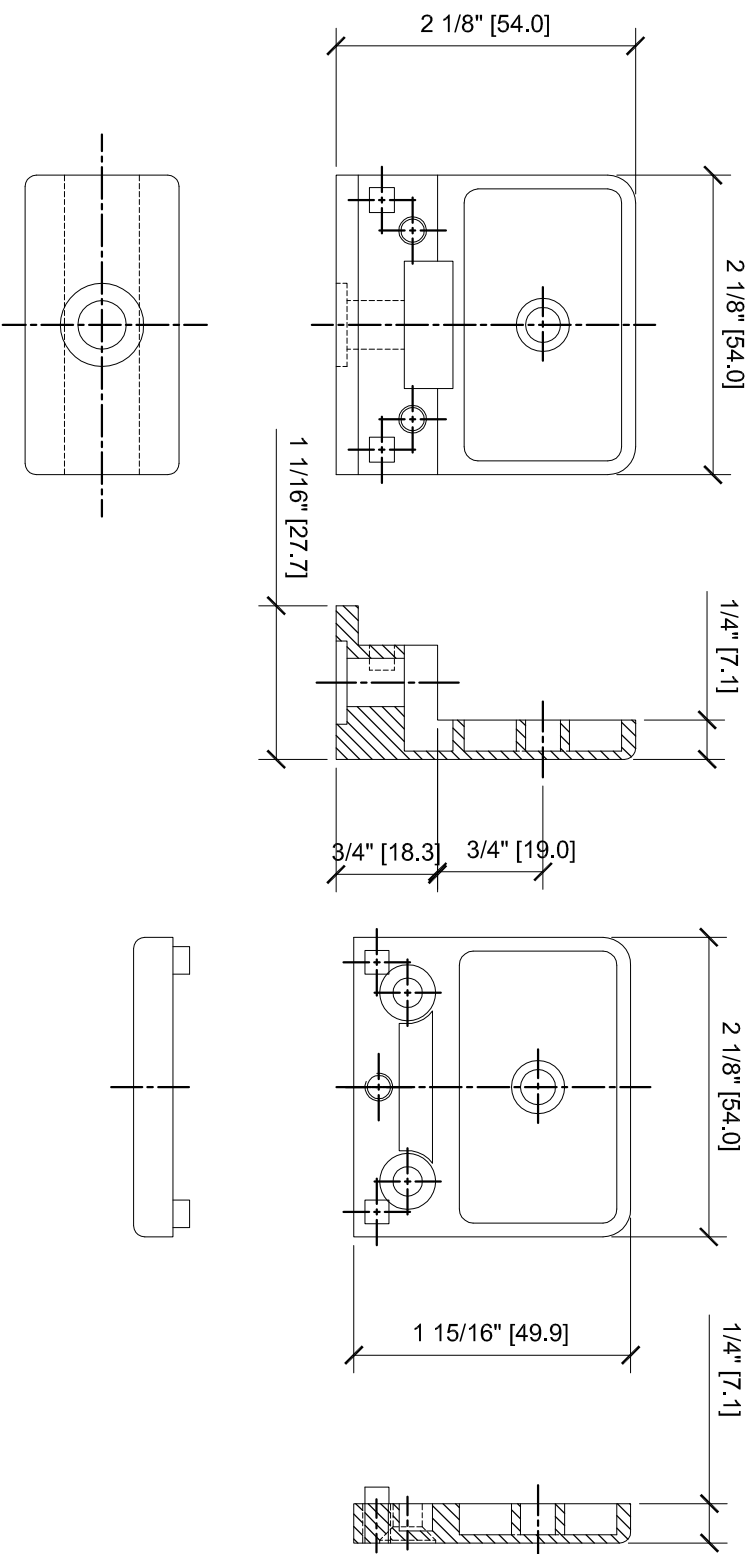
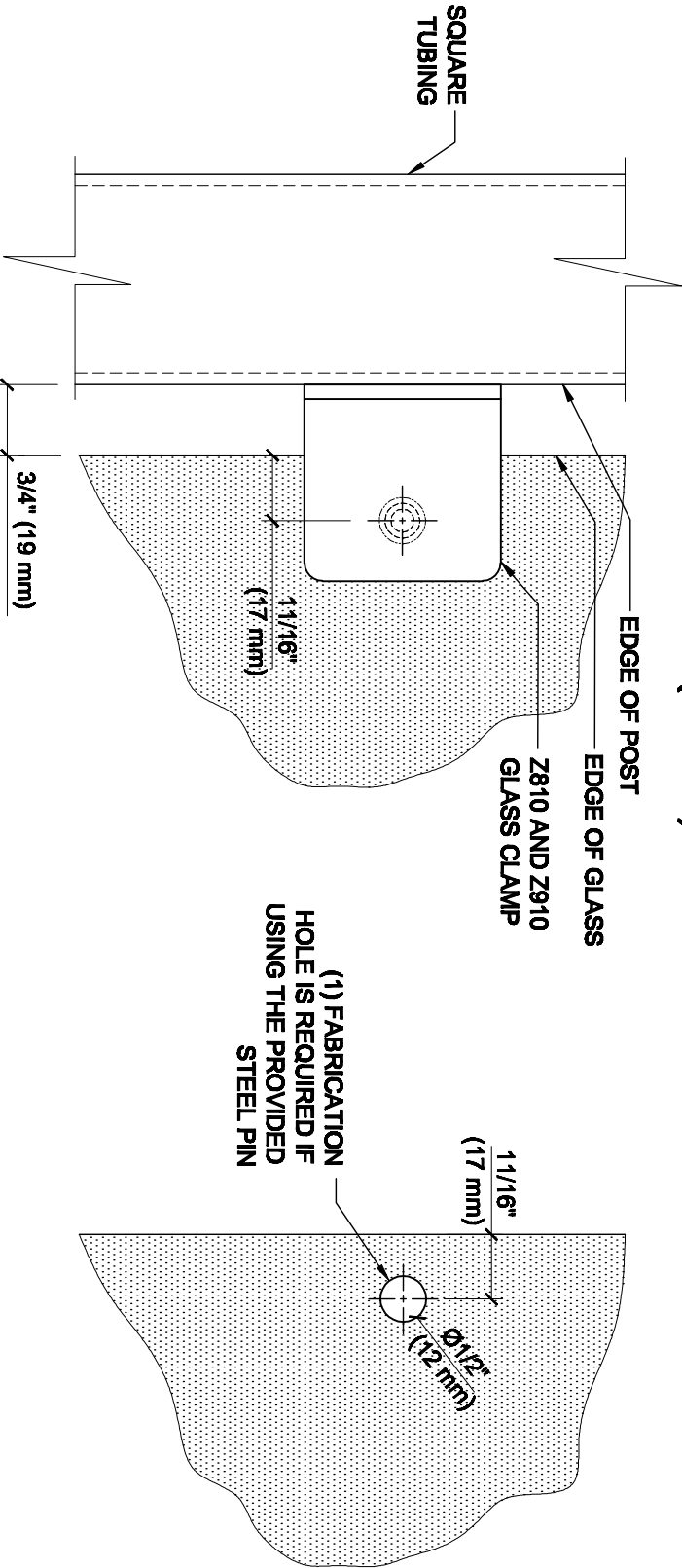


Z-SERIES SQUARE TYPE
FLAT BASE ZINC CLAMPS
FOR 3/8" GLASS
CAT NO. Z810XX



GLASS FABRICATION

GLASS FABRICATION TEMPLATE FOR THE Z-SERIES SQUARE TYPE FLAT BASE CLAMPS FOR 3/8" (10 mm) GLASS



SQUARE TUBING

3/4" (19 mm)

CRL'S STANDARD RECOMMENDED
(GLASS GAP) BETWEEN POST AND
EDGE OF GLASS

GLASS FABRICATION
TEMPLATE USED FOR:

CATALOG NUMBER

Z810BR

Z810CH

Z810SC

Z810BN

Z810GP

Z810W

Z910BS

Z910PS

GLASS CLAMP

GLASS

3/8" (10 mm)

SPECIFICATIONS:

GLASS THICKNESS: MODELS FOR 3/8" (10 mm) GLASS.

BASE DESIGN: FLAT BACK

FOR USE WITH: SQUARE TUBING OR OTHER FLAT SURFACES.

MATERIAL: CHOICE OF ZINC CONSTRUCTED OR STAINLESS STEEL, STAINLESS STEEL, OR POWDER PAINTED ZINC CLAMPS ARE RECOMMENDED FOR MORE DURABILITY IN EXTERIOR APPLICATIONS.

GLASS FABRICATION: FOR 3/8" (10mm), THICK GLASS, 1/2" (12mm) DIAMETER HOLE REQUIRED IF USING PROVIDED STEEL PIN FOR GLASS SUPPORT

INCLUDES: RUBBER GASKETS AND STEEL PIN (FOR OPTIONAL USE) WITH GROMMET.

ALWAYS USE DIMENSIONS SHOWN ON THE PLAN.
DO NOT SCALE OR DIMENSION ACTUAL DRAWING
TO ENSURE ACCURACY



ARCHITECTURAL PRODUCTS
Pht: 800-421-6144 Fx: 800-282-3286
WWW.CRLAURENCE.COM

DESCRIPTION:
Z-SERIES SQUARE TYPE FLAT BASE GLASS CLAMP
FOR 3/8" (10 mm) THICK GLASS

CAT. NO: (SEE CHART) DATE: 04/16/08
FILE NAME: Z810-Gls Fab SCALE: N.T.S.
DRAWN BY: R.A. CHECKED BY: C.H. SHT 1 OF 1