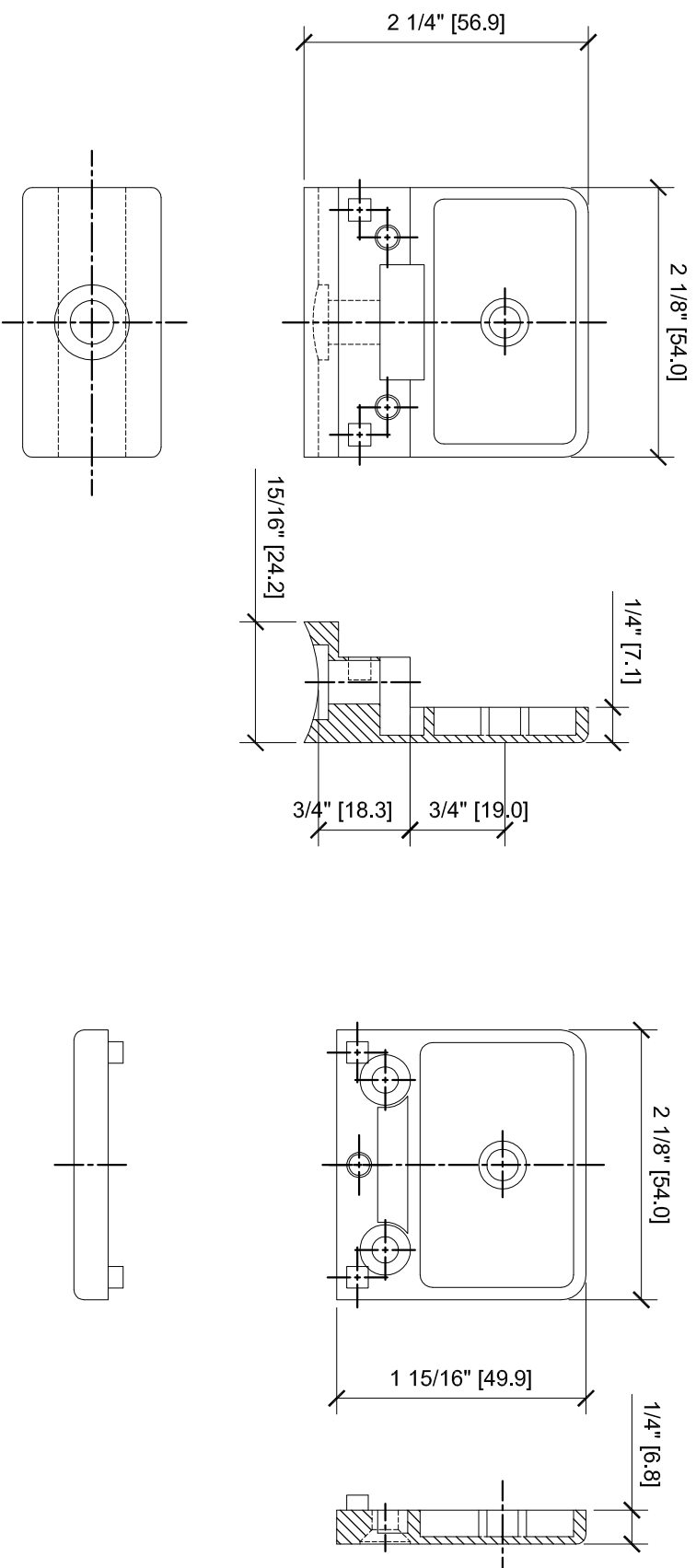
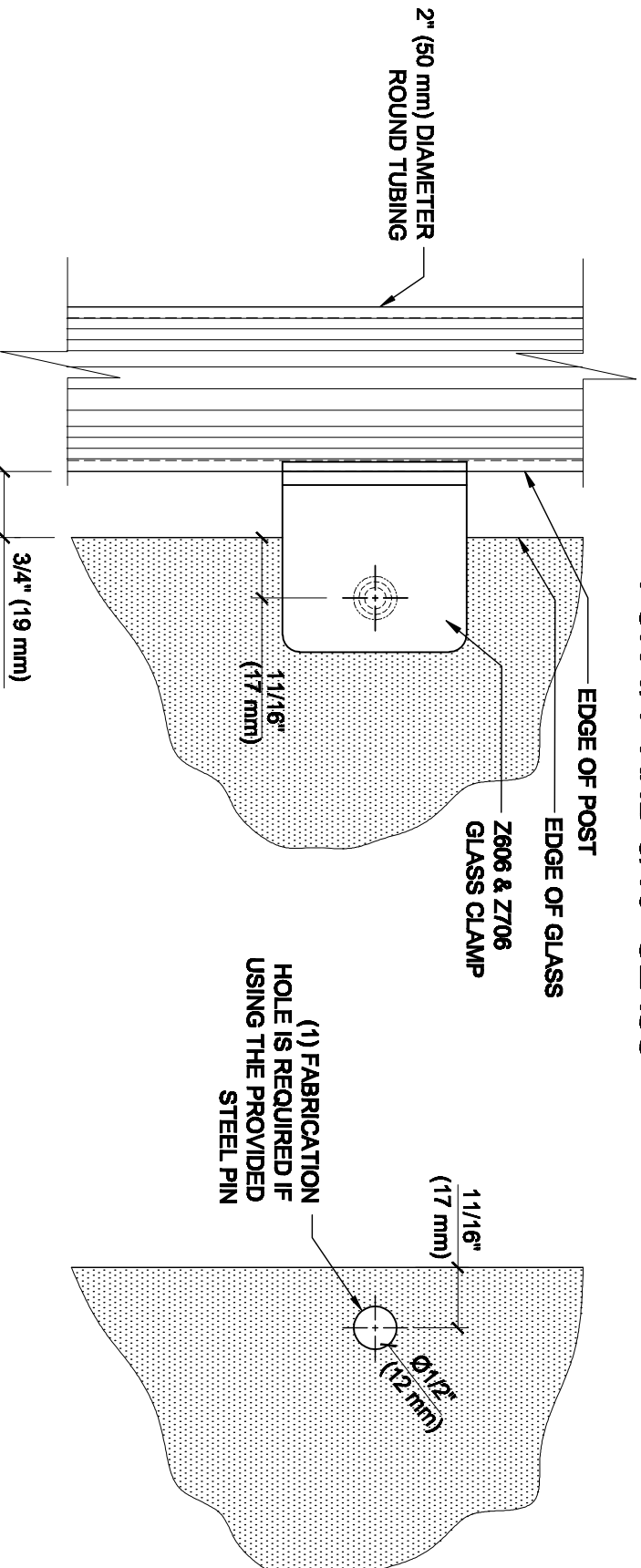


Z-SERIES SQUARE TYPE
RADIUS BASE ZINC CLAMPS
FOR 1/4" AND 5/16" GLASS
CAT NO. Z706xx



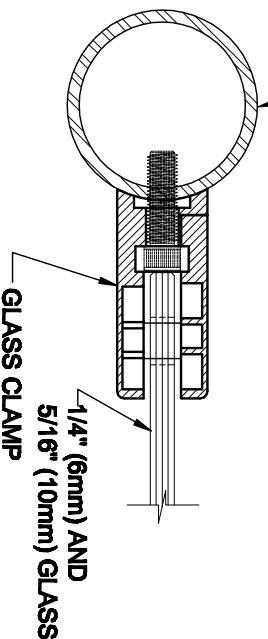
GLASS FABRICATION

GLASS FABRICATION TEMPLATE FOR THE Z-SERIES SQUARE TYPE RADIUS BASE CLAMPS FOR 1/4" AND 5/16" GLASS



2" (50 mm) DIAMETER
ROUND TUBING

CRL'S STANDARD RECOMMENDED
(GLASS GAP) BETWEEN POST AND
EDGE OF GLASS



GLASS FABRICATION TEMPLATE USED FOR:

CATALOG NUMBER	TUBE DIA
Z606BR	2" (50.8 mm) ONLY
Z606CH	2" (50.8 mm) ONLY
Z606SC	2" (50.8 mm) ONLY
Z606BN	2" (50.8 mm) ONLY
Z606GP	2" (50.8 mm) ONLY
Z606W	2" (50.8 mm) ONLY
Z706BS	2" (50.8 mm) ONLY
Z706PS	2" (50.8 mm) ONLY

SPECIFICATIONS:

GLASS THICKNESS: MODELS FOR 1/4" AND 5/16" (6 TO 8 mm) GLASS.

BASE DESIGN: RADIUS BACK

FOR USE WITH: 2" (50.8 mm) DIAMETER ROUND TUBING ONLY.

MATERIAL: CHOICE OF ZINC CONSTRUCTED OR STAINLESS STEEL, STAINLESS STEEL, OR
POWDER PAINTED ZINC CLAMPS ARE RECOMMENDED FOR MORE DURABILITY
IN EXTERIOR APPLICATIONS.

GLASS FABRICATION: FOR 1/4" (6 mm), 5/16" (8mm), THICK GLASS, 1/2" (12mm)
DIAMETER HOLE REQUIRED IF USING PROVIDED STEEL PIN FOR GLASS SUPPORT

INCLUDES: RUBBER GASKETS AND STEEL PIN (FOR OPTIONAL USE) WITH GROMMET.

ALWAYS USE DIMENSIONS SHOWN ON THE PLAN.
DO NOT SCALE OR DIMENSION ACTUAL DRAWING
TO ENSURE ACCURACY



ARCHITECTURAL PRODUCTS
Prt: 800-421-6144 Fx: 800-282-3289
WWW.CRLAURANCE.COM

DESCRIPTION:

Z-SERIES SQUARE TYPE RADIUS BASE GLASS CLAMP

FOR 1/4" (6mm) & 5/16" (8mm) THICK GLASS

CAT. NO: (SEE CHART) DATE: 04/16/08

FILE NAME: Z606-Gls Feb SCALE: N.T.S.

DRAWN BY: R.A. CHECKED BY: C.H. SHT 1 OF 1