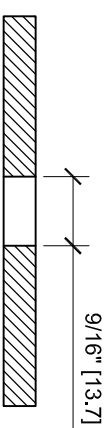
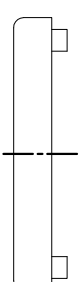
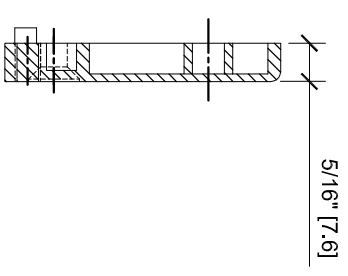
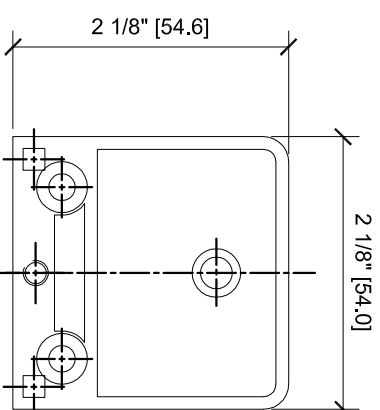
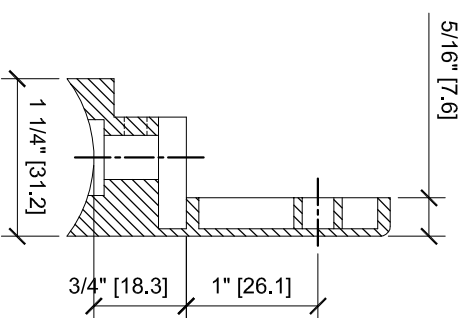
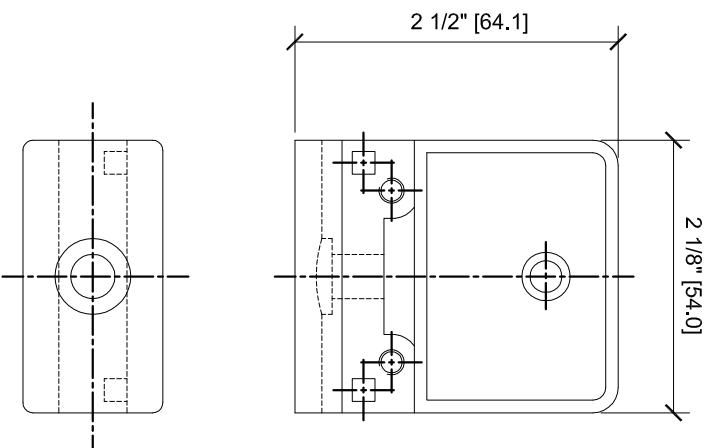
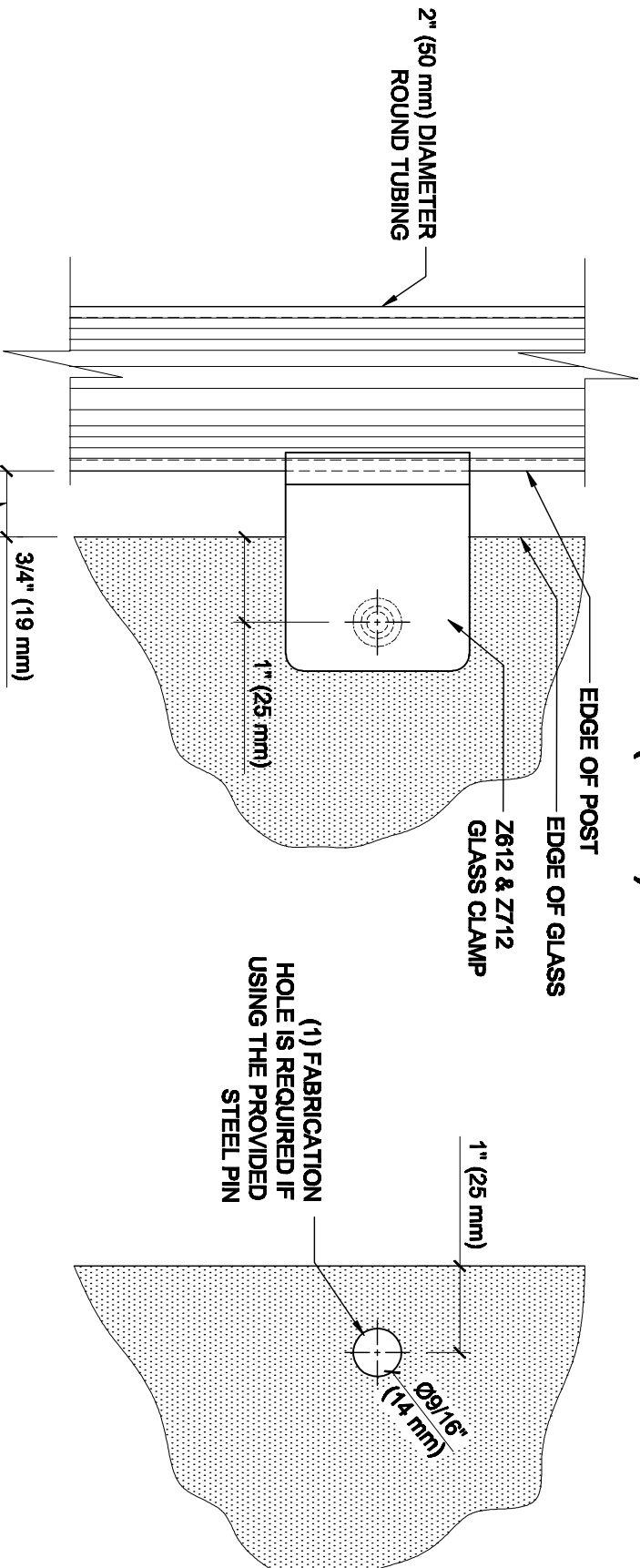


Z-SERIES SQUARE TYPE
RADIUS BASE ZINC CLAMPS
FOR 1/2" GLASS
CAT NO. Z612XX



GLASS FABRICATION

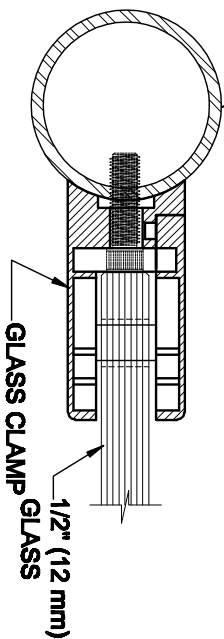
GLASS FABRICATION TEMPLATE FOR THE Z-SERIES SQUARE TYPE RADIUS BASE CLAMPS FOR 1/2" (12 mm) GLASS



2" (50 mm) DIAMETER
ROUND TUBING

CRL'S STANDARD RECOMMENDED
(GLASS GAP) BETWEEN POST AND
EDGE OF GLASS

3/4" (19 mm)



GLASS CLAMP GLASS

1/2" (12 mm)

SPECIFICATIONS:

GLASS THICKNESS: MODELS FOR 1/2" (12 mm) GLASS.

BASE DESIGN: RADIUS BACK

FOR USE WITH: 2" (50.8 mm) DIAMETER ROUND TUBING ONLY.

MATERIAL: CHOICE OF ZINC CONSTRUCTED OR STAINLESS STEEL, STAINLESS STEEL, OR
POWDER PAINTED ZINC CLAMPS ARE RECOMMENDED FOR MORE DURABILITY
IN EXTERIOR APPLICATIONS.

GLASS FABRICATION: FOR 1/2" (12 mm) THICK GLASS, 3/16" (14mm) DIAMETER
HOLE REQUIRED IF USING PROVIDED STEEL PIN FOR GLASS SUPPORT

INCLUDES: RUBBER GASKETS AND STEEL PIN (FOR OPTIONAL USE) WITH GROMMET.

ALWAYS USE DIMENSIONS SHOWN ON THE PLAN.
DO NOT SCALE OR DIMENSION ACTUAL DRAWING
TO ENSURE ACCURACY

GLASS FABRICATION TEMPLATE USED FOR:

CATALOG NUMBER	TUBE DIA
Z612BR	2" (50.8 mm) ONLY
Z612CH	2" (50.8 mm) ONLY
Z612SC	2" (50.8 mm) ONLY
Z612BN	2" (50.8 mm) ONLY
Z612GP	2" (50.8 mm) ONLY
Z612W	2" (50.8 mm) ONLY
Z712BS	2" (50.8 mm) ONLY
Z712PS	2" (50.8 mm) ONLY



ARCHITECTURAL PRODUCTS
Prt: 800-421-6144 Fx: 800-282-3289
WWW.CRLAURENCE.COM

DESCRIPTION:

Z-SERIES SQUARE TYPE RADIUS BASE GLASS CLAMP

FOR 1/2" (12 mm) THICK GLASS

CAT. NO: (SEE CHART)

DATE: 04/16/08

FILE NAME: Z612-GLASS FAB

SCALE: 1/2"=1'-0"

DRAWN BY: R.A.

CHECKED BY:

C.H.

SHT 1 OF 1