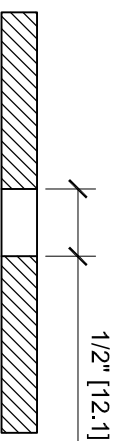
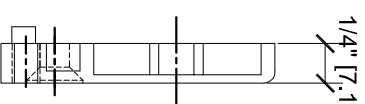
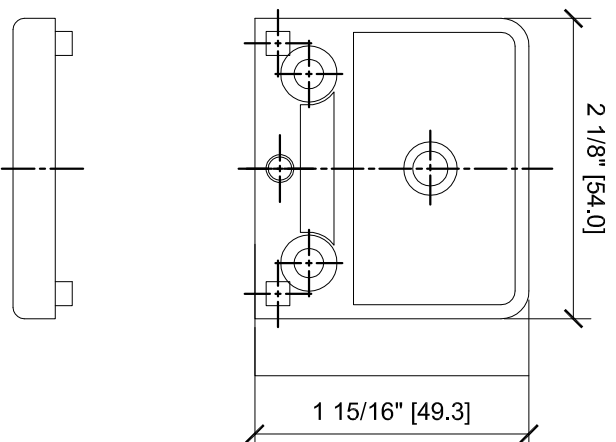
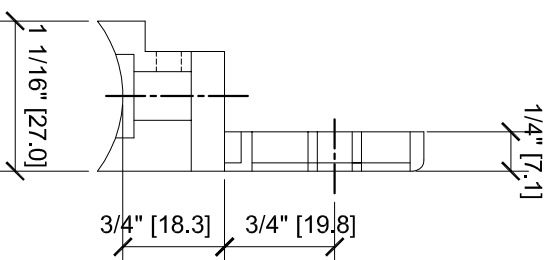
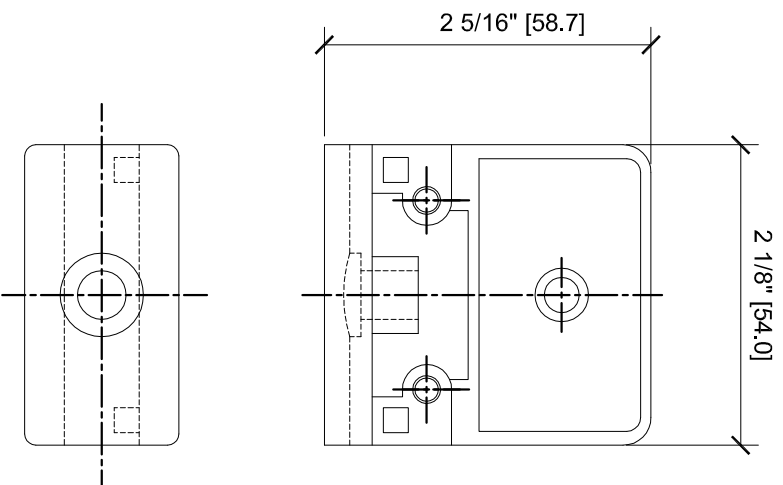
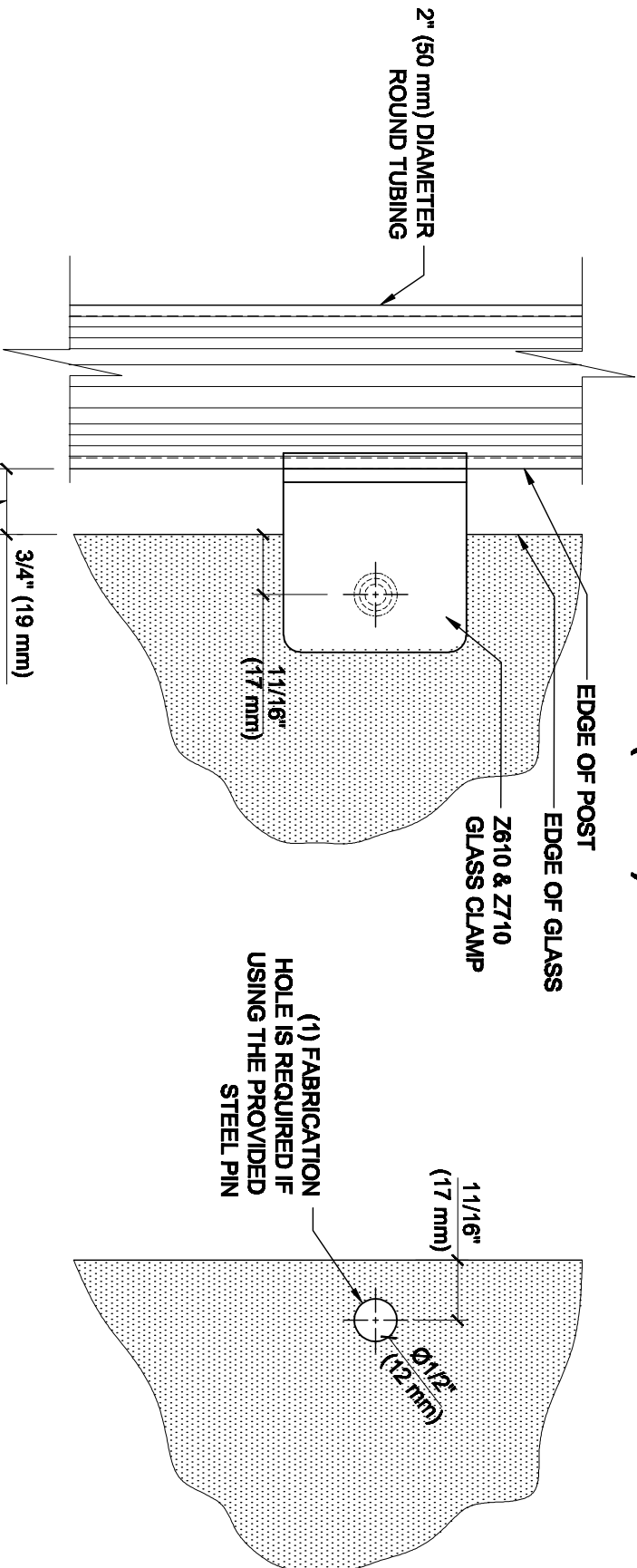


Z-SERIES SQUARE TYPE
RADIUS BASE ZINC CLAMPS
FOR 3/8" GLASS
CAT NO. Z610XX



GLASS FABRICATION

GLASS FABRICATION TEMPLATE FOR THE Z-SERIES SQUARE TYPE RADIUS BASE CLAMPS FOR 3/8" (10 mm) GLASS



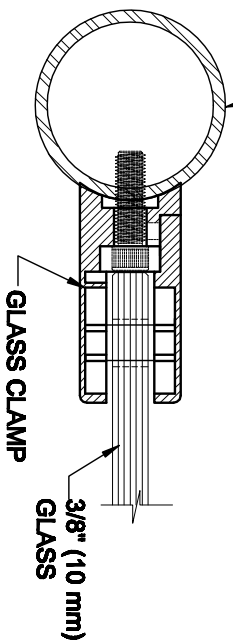
2" (50 mm) DIAMETER
ROUND TUBING

CRL'S STANDARD RECOMMENDED
(GLASS GAP) BETWEEN POST AND
EDGE OF GLASS

ALWAYS USE DIMENSIONS SHOWN ON THE PLAN.
DO NOT SCALE OR DIMENSION ACTUAL DRAWING
TO ENSURE ACCURACY

GLASS FABRICATION TEMPLATE USED FOR:

CATALOG NUMBER	TUBE DIA
Z610BR	2" (50.8 mm) ONLY
Z610CH	2" (50.8 mm) ONLY
Z610SC	2" (50.8 mm) ONLY
Z610BN	2" (50.8 mm) ONLY
Z610GP	2" (50.8 mm) ONLY
Z610W	2" (50.8 mm) ONLY
Z710BS	2" (50.8 mm) ONLY
Z710PS	2" (50.8 mm) ONLY



SPECIFICATIONS:

GLASS THICKNESS: MODELS FOR 3/8" (10 mm) GLASS.

BASE DESIGN: RADIUS BACK

FOR USE WITH: 2" (50.8 mm) DIAMETER ROUND TUBING ONLY.

MATERIAL: CHOICE OF ZINC CONSTRUCTED OR STAINLESS STEEL. STAINLESS STEEL OR
POWDER PAINTED ZINC CLAMPS ARE RECOMMENDED FOR MORE DURABILITY
IN EXTERIOR APPLICATIONS.

GLASS FABRICATION: FOR 3/8" (10mm), THICK GLASS, 1/2" (12mm) DIAMETER
HOLE REQUIRED IF USING PROVIDED STEEL PIN FOR GLASS SUPPORT

INCLUDES: RUBBER GASKETS AND STEEL PIN (FOR OPTIONAL USE) WITH GROMMET.



ARCHITECTURAL PRODUCTS
Prt: 800-421-6144 Fx: 800-282-3289
WWW.CRLAURENCE.COM

DESCRIPTION:

Z-SERIES SQUARE TYPE RADIUS BASE GLASS CLAMP

FOR 3/8" (10 mm) THICK GLASS

CAT. NO: (SEE CHART)

DATE: 04/16/08

FILE NAME: Z610-Gls Feb

SCALE: N.T.S.

DRAWN BY: R.A.

CHECKED BY: C.H.

SHT 1 OF 1