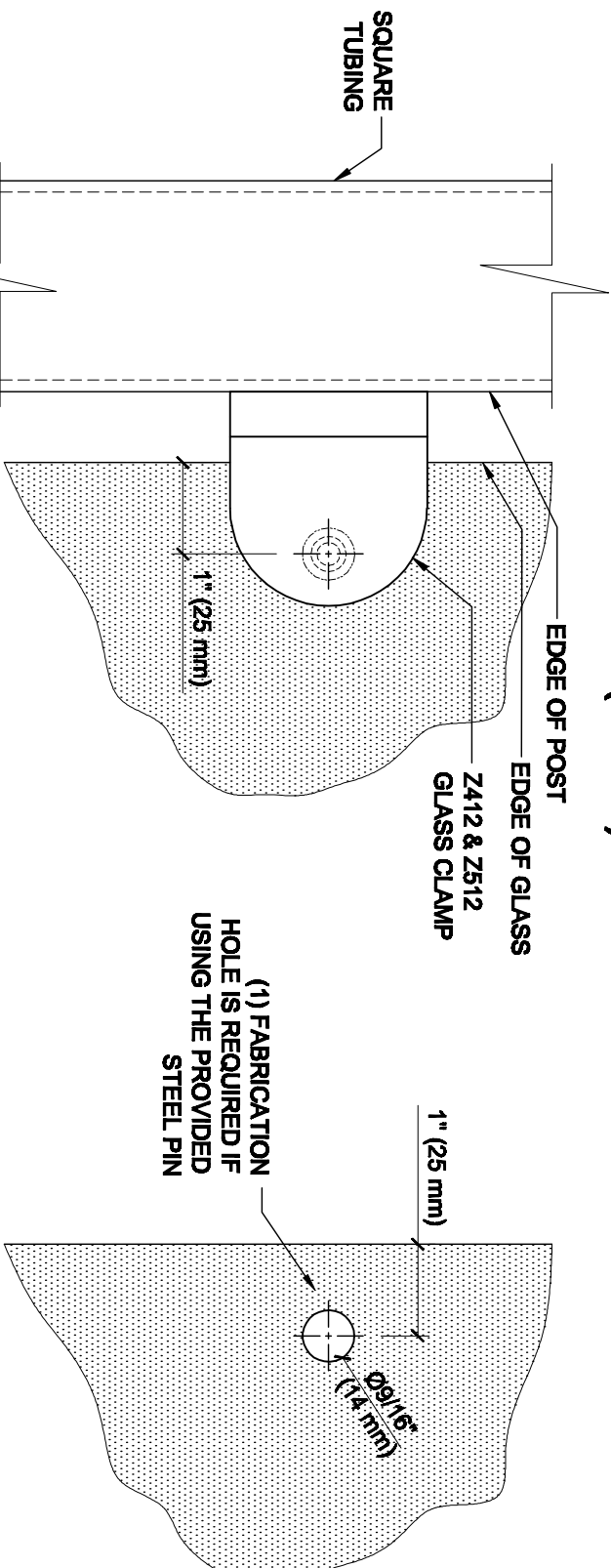


# GLASS FABRICATION TEMPLATE FOR THE Z-SERIES ROUND TYPE FLAT BASE CLAMPS FOR 1/2" (12 mm) GLASS



ALWAYS USE DIMENSIONS SHOWN ON THE PLAN.  
DO NOT SCALE OR DIMENSION ACTUAL DRAWING  
TO ENSURE ACCURACY

## SPECIFICATIONS:

GLASS THICKNESS: MODELS FOR 1/2" (12 mm) GLASS.  
BASE DESIGN: FLAT BACK  
FOR USE WITH: SQUARE TUBING OR OTHER FLAT SURFACES.  
MATERIAL: CHOICE OF ZINC CONSTRUCTED OR STAINLESS STEEL, STAINLESS STEEL, OR POWDER PAINTED ZINC CLAMPS ARE RECOMMENDED FOR MORE DURABILITY IN EXTERIOR APPLICATIONS.  
GLASS FABRICATION: FOR 1/2" (12mm) THICK GLASS : 9/16" (14mm) DIAMETER HOLE REQUIRED IF USING PROVIDED STEEL PIN FOR GLASS SUPPORT.  
INCLUDES: RUBBER GASKETS AND STEEL PIN (FOR OPTIONAL USE) WITH GROMMET.

## GLASS FABRICATION TEMPLATE USED FOR:

CATALOG NUMBER
Z412BR
Z412CH
Z412SC
Z412BN
Z412GP
Z412W
Z512BS
Z512PS

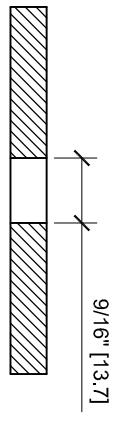
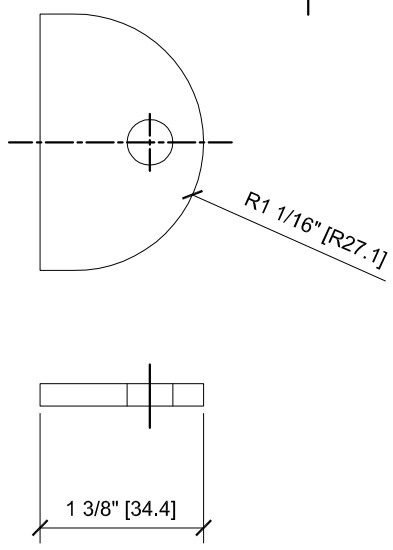
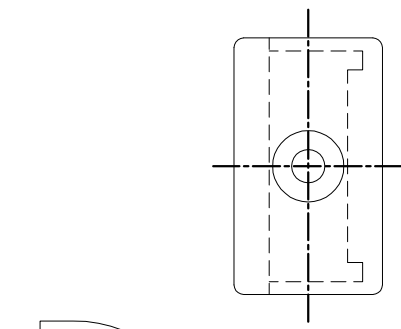
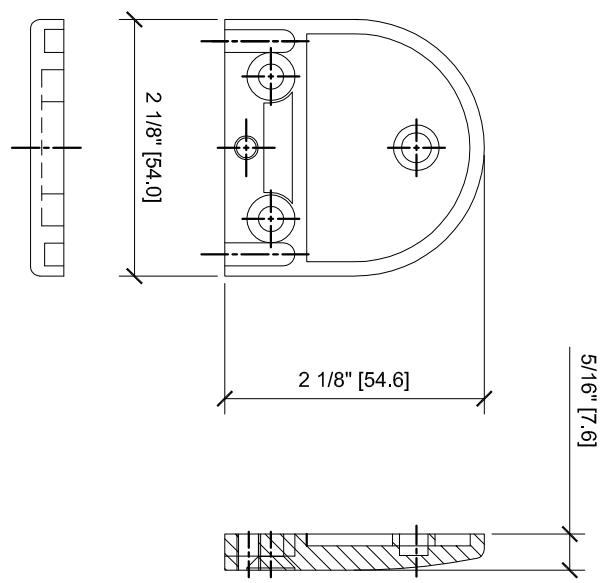
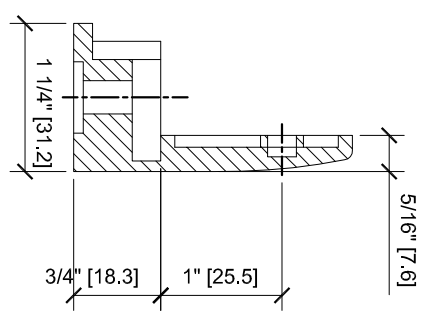
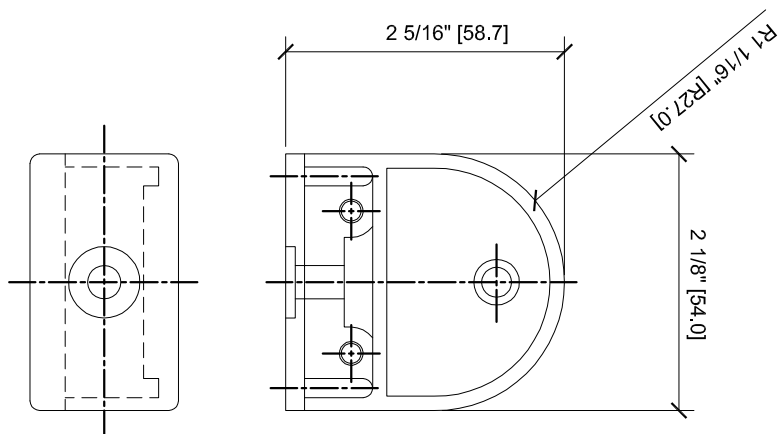


ARCHITECTURAL PRODUCTS  
Pht: 800-421-6144 Fx: 800-282-3286  
WWW.CRLAURENCE.COM

DESCRIPTION:  
Z-SERIES ROUND TYPE FLAT BASE GLASS CLAMP  
FOR 1/2" (12 mm) THICK GLASS

CAT. NO: (SEE CHART)	DATE: 04/16/08
FILE NAME: Z412-G18 Feb	SCALE: N..T.S.
DRAWN BY: R.A.	CHECKED BY: C.H.
	SHT 1 OF 1

Z-SERIES ROUND TYPE FLAT  
BASE ZINC CLAMPS  
FOR 1/2" GLASS  
CAT NO. Z512XX



GLASS FABRICATION