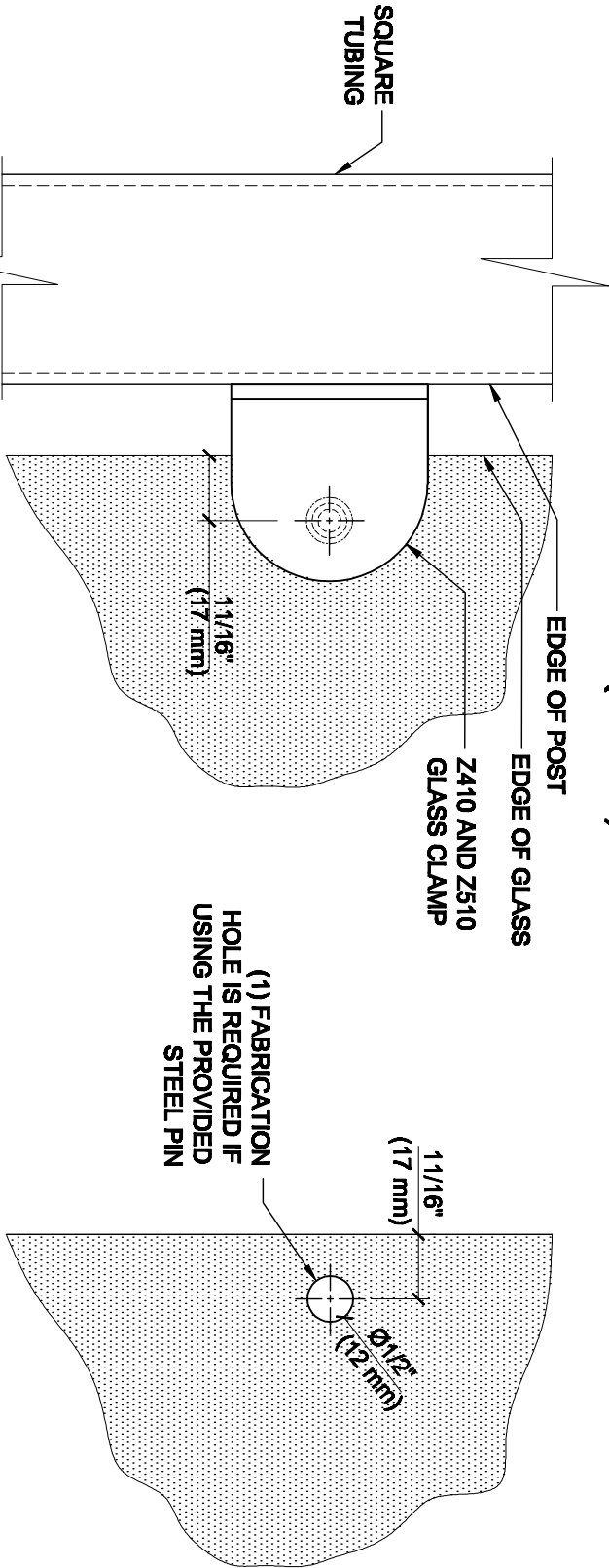
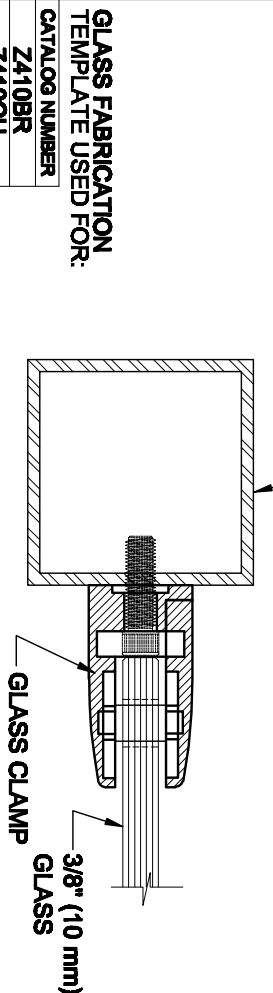


GLASS FABRICATION TEMPLATE FOR THE  
Z-SERIES ROUND TYPE FLAT BASE CLAMPS  
FOR 3/8" (10 mm) GLASS



3/4" (19 mm)  
CRL'S STANDARD RECOMMENDED  
(GLASS GAP ) BETWEEN POST AND  
EDGE OF GLASS



ALWAYS USE DIMENSIONS SHOWN ON THE PLAN.  
DO NOT SCALE OR DIMENSION ACTUAL DRAWING  
TO ENSURE ACCURACY

**SPECIFICATIONS:**

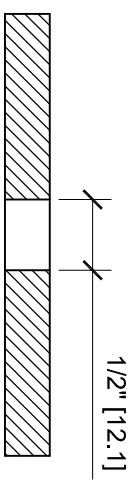
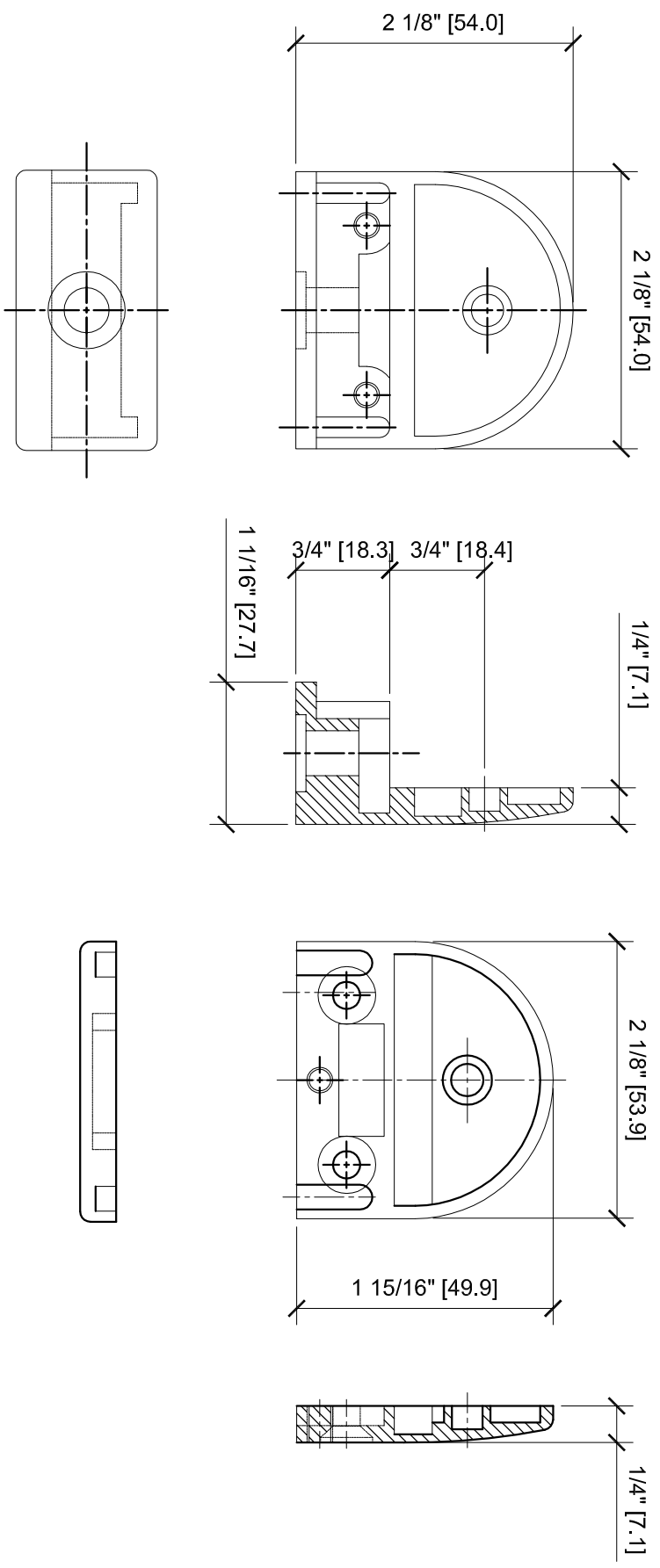
GLASS THICKNESS: MODELS FOR 3/8" (10mm) GLASS.  
BASE DESIGN: FLAT BACK  
FOR USE WITH: SQUARE TUBING OR OTHER FLAT SURFACES.  
MATERIAL: CHOICE OF ZINC CONSTRUCTED OR STAINLESS STEEL, STAINLESS STEEL, OR  
POWDER PAINTED ZINC CLAMPS ARE RECOMMENDED FOR MORE DURABILITY  
IN EXTERIOR APPLICATIONS.  
GLASS FABRICATION: FOR 3/8" (10mm), THICK GLASS, 1/2" (12mm) DIAMETER  
HOLE REQUIRED IF USING PROVIDED STEEL PIN FOR GLASS SUPPORT  
INCLUDES: RUBBER GASKETS AND STEEL PIN (FOR OPTIONAL USE) WITH GROMMET.

GLASS FABRICATION  
TEMPLATE USED FOR:

CATALOG NUMBER
Z410BR
Z410CH
Z410SC
Z410BN
Z410GP
Z410W
Z510BS
Z510PS

DESCRIPTION: Z-SERIES ROUND TYPE FLAT BASE GLASS CLAMP FOR 3/8" (10mm) THICK GLASS			
CAT. NO:	(SEE CHART)	DATE:	04/16/08
FILE NAME:	Z410-Gls Feb	SCALE:	N.T.S.
DRAWN BY:	R.A.	CHECKED BY:	C.H.
		SHT	1 OF 1

Z-SERIES ROUND TYPE FLAT  
BASE ZINC CLAMPS  
FOR 3/8" GLASS  
CAT NO. Z510XX



GLASS FABRICATION