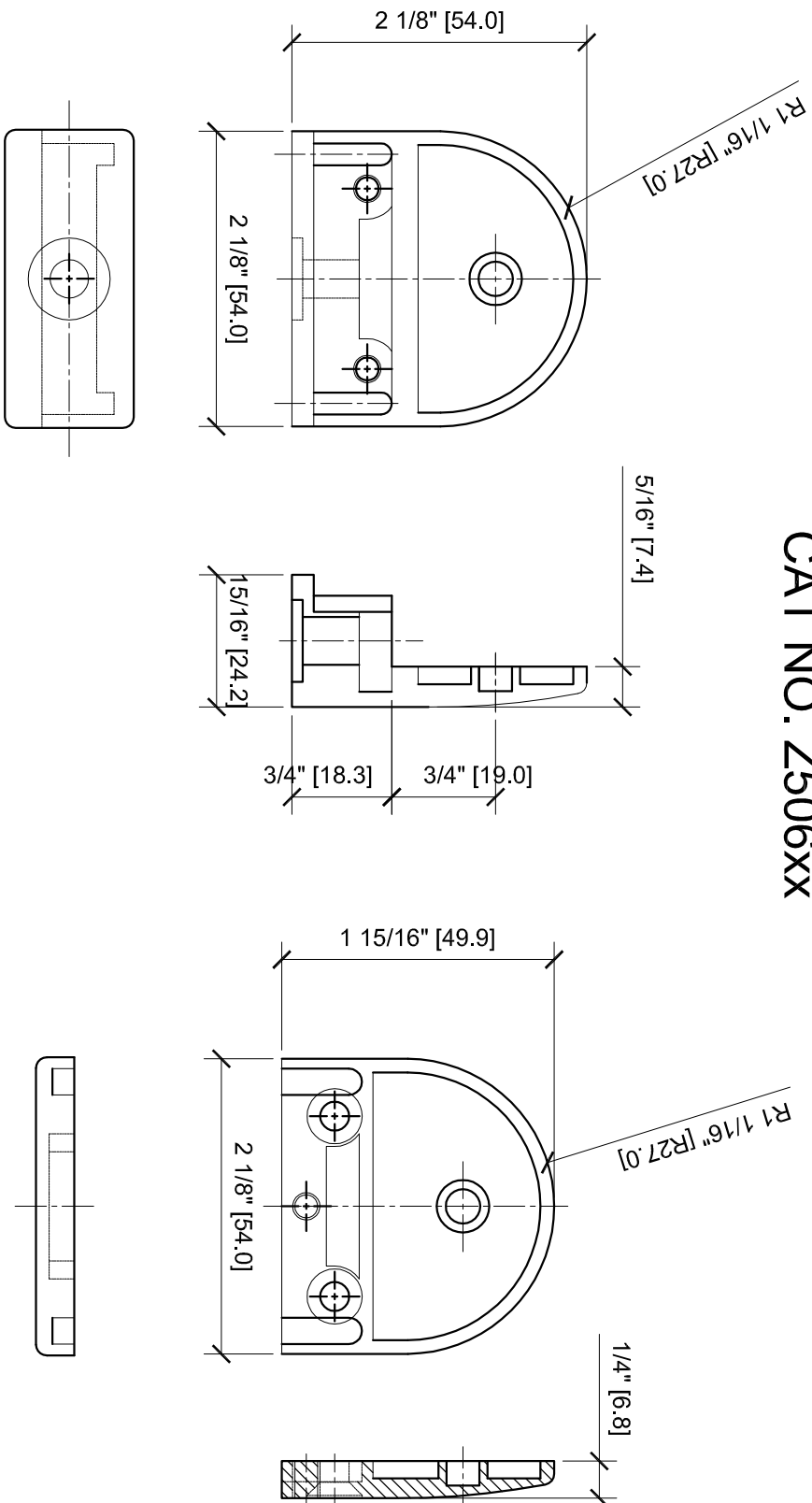


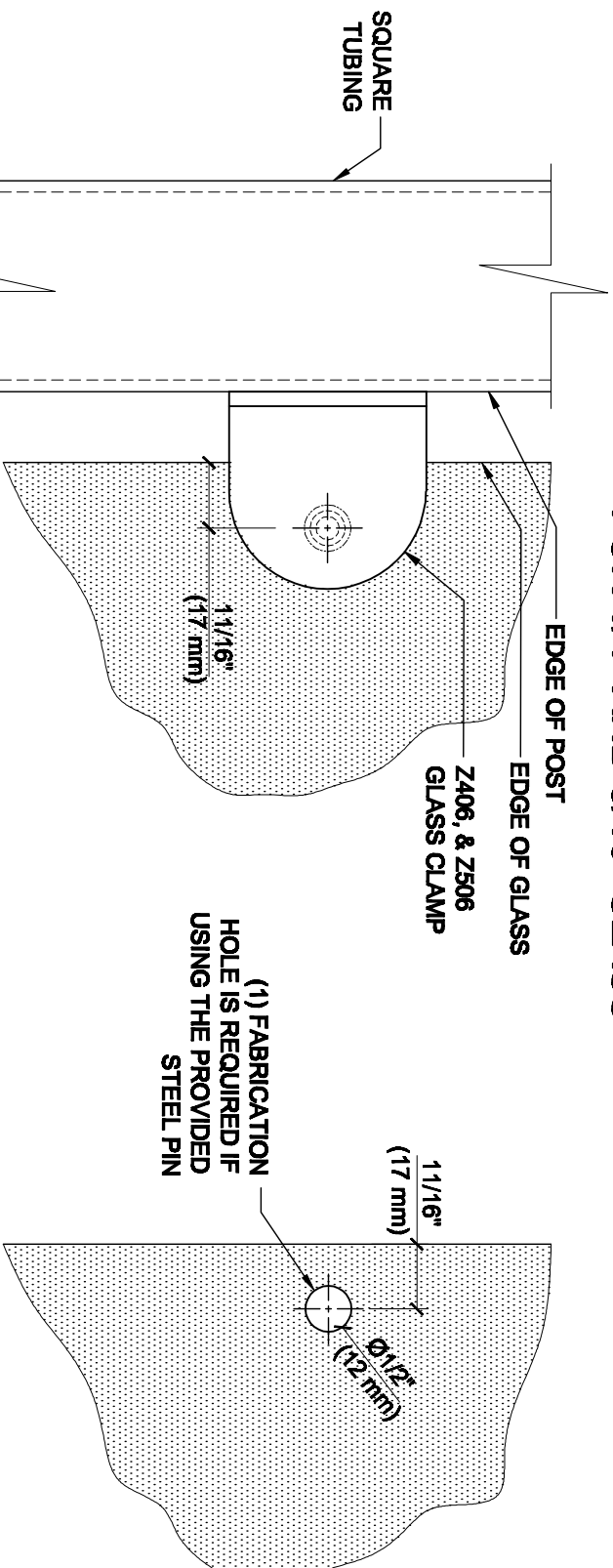
Z-SERIES ROUND TYPE FLAT  
BASE ZINC CLAMPS  
FOR 1/4" AND 5/16" GLASS  
CAT NO. Z506xx



1/2" [12.1]

GLASS FABRICATION

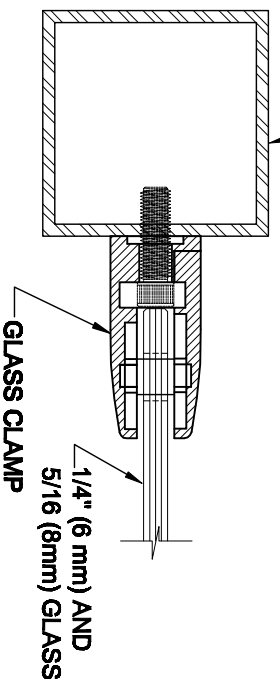
# GLASS FABRICATION TEMPLATE FOR THE Z-SERIES ROUND TYPE FLAT BASE CLAMPS FOR 1/4" AND 5/16" GLASS



SQUARE  
TUBING

3/4" (19 mm)

CRL'S STANDARD RECOMMENDED  
(GLASS GAP ) BETWEEN POST AND  
EDGE OF GLASS



ALWAYS USE DIMENSIONS SHOWN ON THE PLAN.  
DO NOT SCALE OR DIMENSION ACTUAL DRAWING  
TO ENSURE ACCURACY

## SPECIFICATIONS:

GLASS THICKNESS: MODELS FOR 1/4" AND 5/16" (6 TO 8 mm) GLASS.

BASE DESIGN: FLAT BACK

FOR USE WITH: SQUARE TUBING OR OTHER FLAT SURFACES.

MATERIAL: CHOICE OF ZINC CONSTRUCTED OR STAINLESS STEEL, STAINLESS STEEL, OR  
POWDER PAINTED ZINC CLAMPS ARE RECOMMENDED FOR MORE DURABILITY  
IN EXTERIOR APPLICATIONS.

GLASS FABRICATION: FOR 1/4" (6 mm), 5/16" (8mm), THICK GLASS, 1/2" (12mm)  
DIAMETER HOLE REQUIRED IF USING PROVIDED STEEL PIN FOR GLASS SUPPORT

INCLUDES: RUBBER GASKETS AND STEEL PIN (FOR OPTIONAL USE) WITH GROMMET.

## GLASS FABRICATION TEMPLATE USED FOR:

CATALOG NUMBER
Z406BR
Z406CH
Z406SC
Z406BN
Z406GP
Z406W
Z506BS
Z506PS



ARCHITECTURAL PRODUCTS  
Pht: 800-421-6144 Fx: 800-282-3286  
WWW.CRLAURENCE.COM

## DESCRIPTION:

Z-SERIES ROUND TYPE FLAT BASE GLASS CLAMP  
FOR 1/4" (6mm) & 5/16" (8mm) THICK GLASS

CAT. NO: (SEE CHART)	DATE: 04/16/08
FILE NAME: Z406-Gls Feb	SCALE: N.T.S.
DRAWN BY: R.A.	CHECKED BY: C.H.
	SHT 1 OF 1