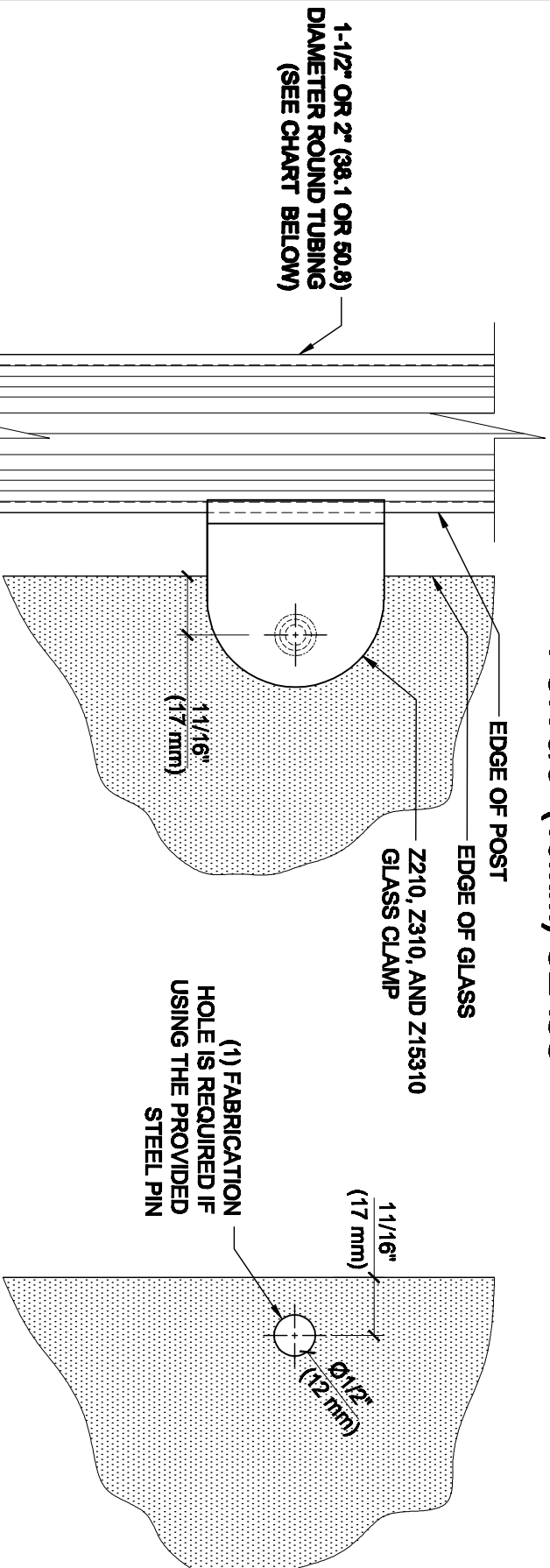
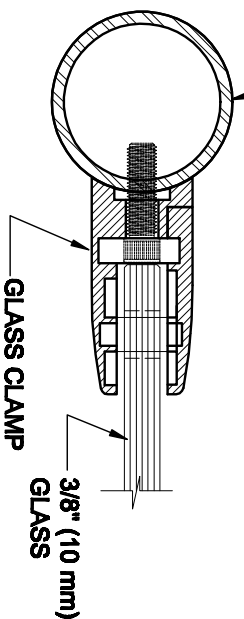


# GLASS FABRICATION TEMPLATE FOR THE Z-SERIES ROUND TYPE RADIUS BASE CLAMPS FOR 3/8" (10mm) GLASS



1-1/2" OR 2" (38.1 OR 50.8)  
DIAMETER ROUND TUBING  
(SEE CHART BELOW)

3/4" (19 mm)  
CRL'S STANDARD RECOMMENDED  
(GLASS GAP ) BETWEEN POST AND  
EDGE OF GLASS



## SPECIFICATIONS:

GLASS THICKNESS: MODELS FOR 3/8" (10 mm) GLASS.

BASE DESIGN: RADIUS BACK

FOR USE WITH: 1-1/2" OR 2" (38.1 OR 50.8 mm) DIAMETER ROUND TUBING (SEE CHART)

MATERIAL: CHOICE OF ZINC CONSTRUCTED OR STAINLESS STEEL. STAINLESS STEEL OR POWDER PAINTED ZINC CLAMPS ARE RECOMMENDED FOR MORE DURABILITY IN EXTERIOR APPLICATIONS.

GLASS FABRICATION: FOR 3/8" (10 mm)THICK GLASS, 1/2" (12mm) DIAMETER HOLE REQUIRED IF USING PROVIDED STEEL PIN FOR GLASS SUPPORT

INCLUDES: RUBBER GASKETS AND STEEL PIN (FOR OPTIONAL USE) WITH GROMMET.

ALWAYS USE DIMENSIONS SHOWN ON THE PLAN.  
DO NOT SCALE OR DIMENSION ACTUAL DRAWING  
TO ENSURE ACCURACY

## GLASS FABRICATION TEMPLATE USED FOR:

CATALOG NUMBER	TUBE DIA
Z210BR	2" (50.8mm)
Z210CH	2" (50.8mm)
Z210SC	2" (50.8mm)
Z210BN	2" (50.8mm)
Z210GP	2" (50.8mm)
Z210W	2" (50.8mm)
Z310BS	2" (50.8mm)
Z310PS	2" (50.8mm)
Z15310BS	1-1/2" (38.1mm)
Z15310PS	1-1/2" (38.1mm)

## DESCRIPTION:

Z-SERIES ROUND TYPE RADIUS BASE GLASS CLAMP

FOR 3/8" (10mm) THICK GLASS

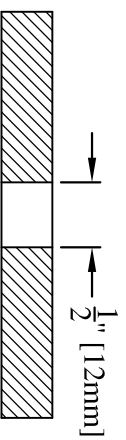
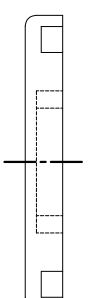
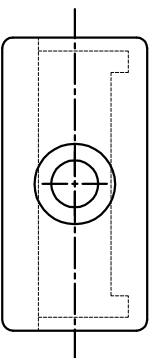
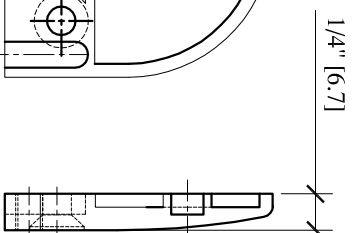
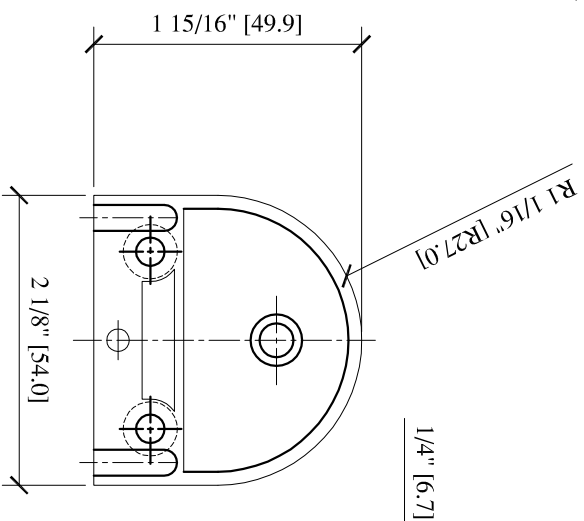
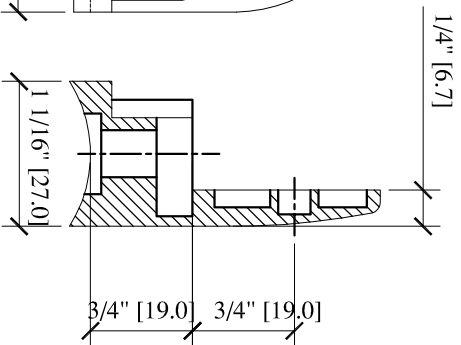
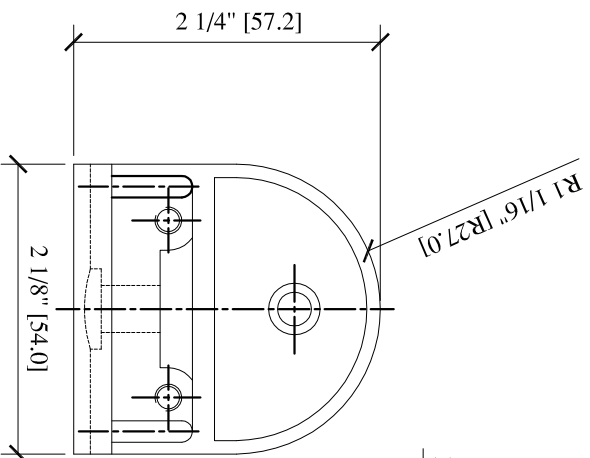
CAT. NO: (SEE CHART) DATE: 04/16/08

FILE NAME: Z210-GlaFab SCALE: N.T.S.

DRAWN BY: R.A. CHECKED BY: C.H.

SHT 1 OF 1

Z-SERIES ROUND TYPE  
RADIUS BASE ZINC CLAMPS  
FOR 3/8" GLASS  
CAT NO. Z210xx



GLASS FABRICATION