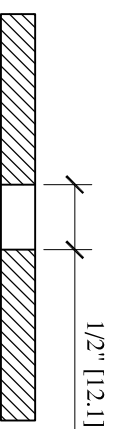
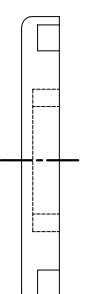
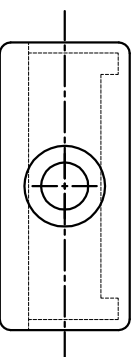
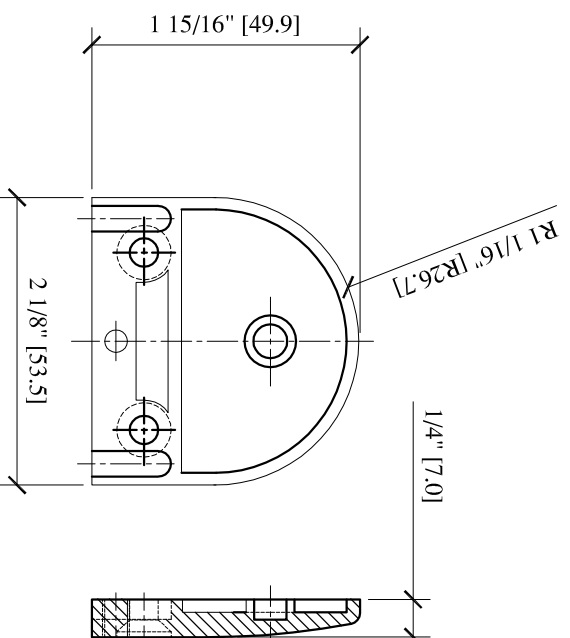
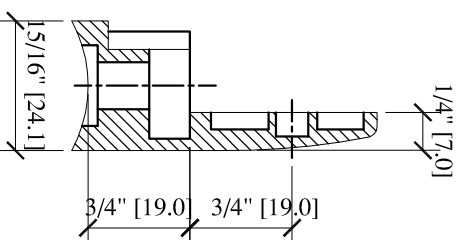
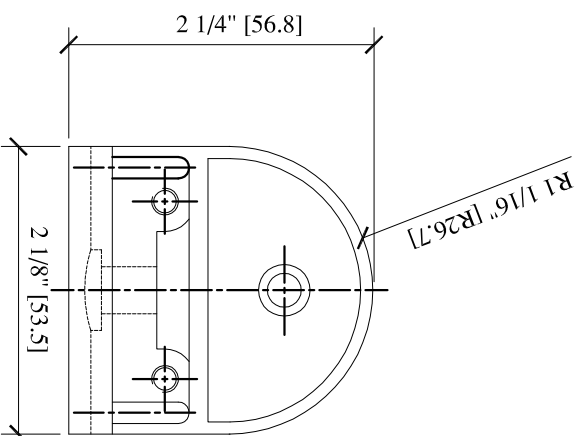
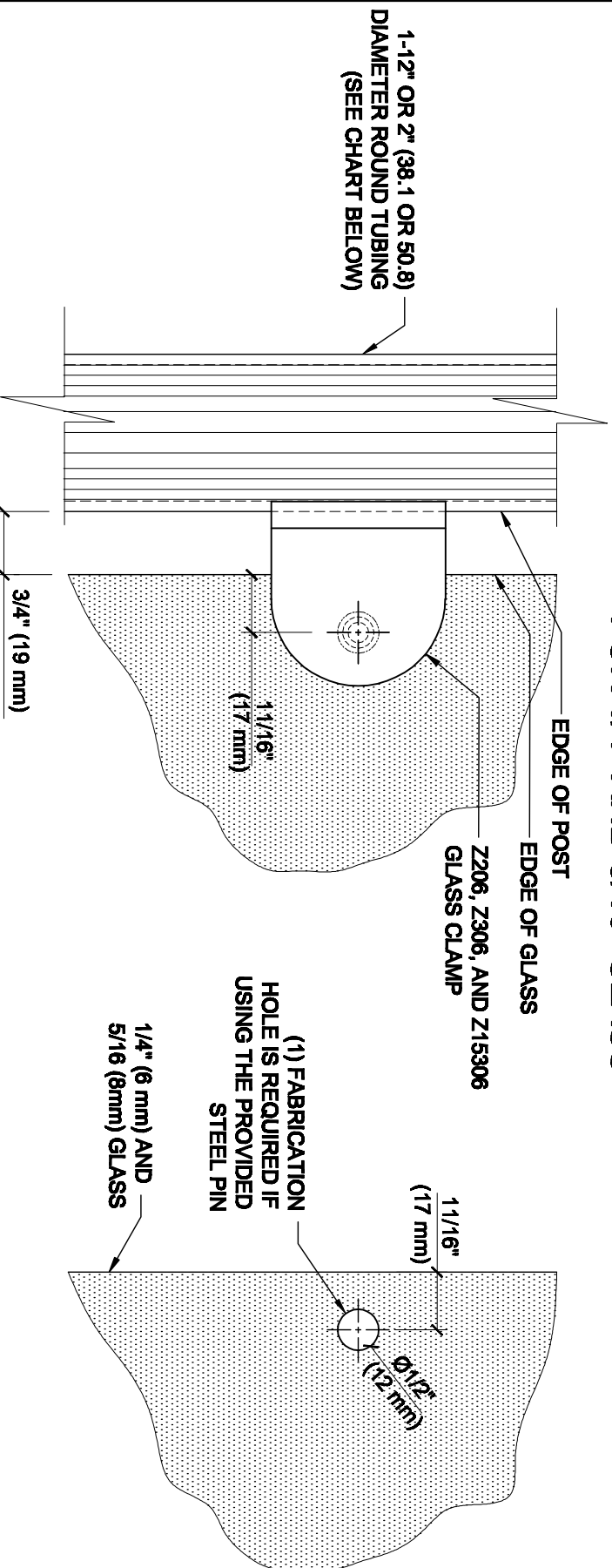


Z-SERIES ROUND TYPE  
RADIUS BASE ZINC CLAMPS  
FOR 1/4" AND 5/16" GLASS  
CAT NO. Z206xx



GLASS FABRICATION

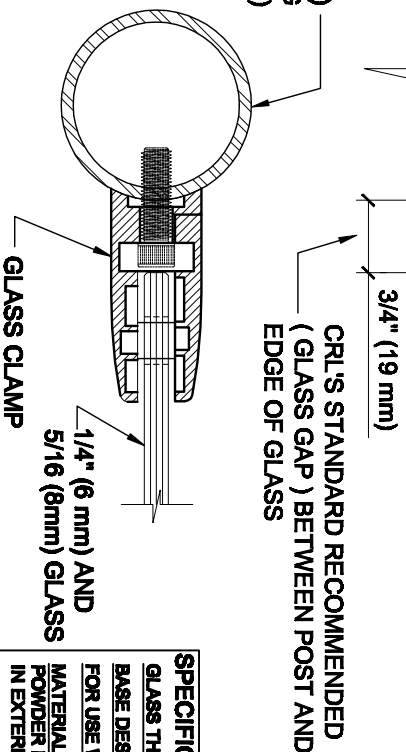
# GLASS FABRICATION TEMPLATE FOR THE Z-SERIES ROUND TYPE RADIUS BASE CLAMPS FOR 1/4" AND 5/16" GLASS



1-1/2" OR 2" (38.1 OR 50.8)  
DIAMETER ROUND TUBING  
(SEE CHART BELOW)

## GLASS FABRICATION TEMPLATE USED FOR:

CATALOG NUMBER	TUBE DIA
Z206BR	2" (50.8 mm)
Z206CH	2" (50.8 mm)
Z206SC	2" (50.8 mm)
Z206BN	2" (50.8 mm)
Z206GP	2" (50.8 mm)
Z206W	2" (50.8 mm)
Z306BS	2" (50.8 mm)
Z306PS	2" (50.8 mm)
Z15306BS	1-1/2" (38.1 mm)
Z15306PS	1-1/2" (38.1 mm)



## SPECIFICATIONS:

GLASS THICKNESS: MODELS FOR 1/4" AND 5/16" (6 TO 8 mm) GLASS.  
BASE DESIGN: RADIUS BACK  
FOR USE WITH: 1-1/2" OR 2" (38.1 OR 50.8 mm) DIAMETER ROUND TUBING (SEE CHART).  
MATERIAL: CHOICE OF ZINC CONSTRUCTED OR STAINLESS STEEL, STAINLESS STEEL, OR POWDER PAINTED ZINC CLAMPS ARE RECOMMENDED FOR MORE DURABILITY IN EXTERIOR APPLICATIONS.  
GLASS FABRICATION: FOR 1/4" (6 mm), 5/16" (8mm), THICK GLASS, 1/2" (12mm) DIAMETER HOLE REQUIRED IF USING PROVIDED STEEL PIN FOR GLASS SUPPORT.  
INCLUDES: RUBBER GASKETS AND STEEL PIN (FOR OPTIONAL USE) WITH GROMMET.

ALWAYS USE DIMENSIONS SHOWN ON THE PLAN.  
DO NOT SCALE OR DIMENSION ACTUAL DRAWING  
TO ENSURE ACCURACY