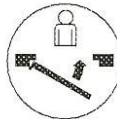
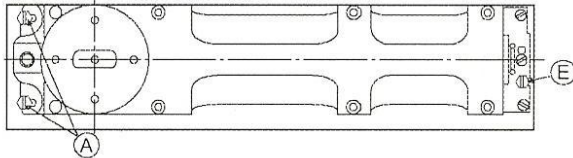


LOCATIONS TO SERVE THE INDUSTRIES THROUGHOUT NORTHAMERICA AND EUROPE
C.R. Laurence Co., Inc. Toll Free Phone (800) 421-6144 Fax(800) 262-3299
<http://www.crlaurence.com>

CRL HEAVY WEIGHT, FLOOR MOUNT DOOR CLOSERS

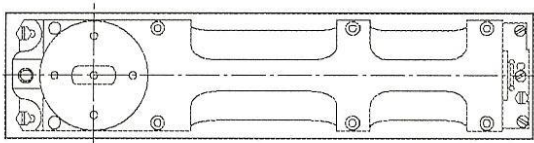
CRL8500

INSTALLATION INSTRUCTIONS



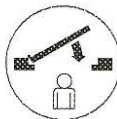
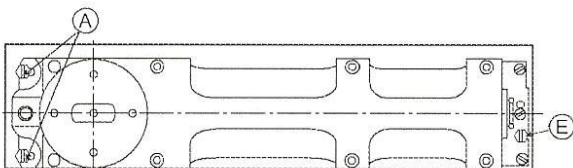
Right-Hand Door (Left-Hand Reverse Bevel)

Loosen mounting screws **A** and **E**
 Move closer in cement box as illustrated.



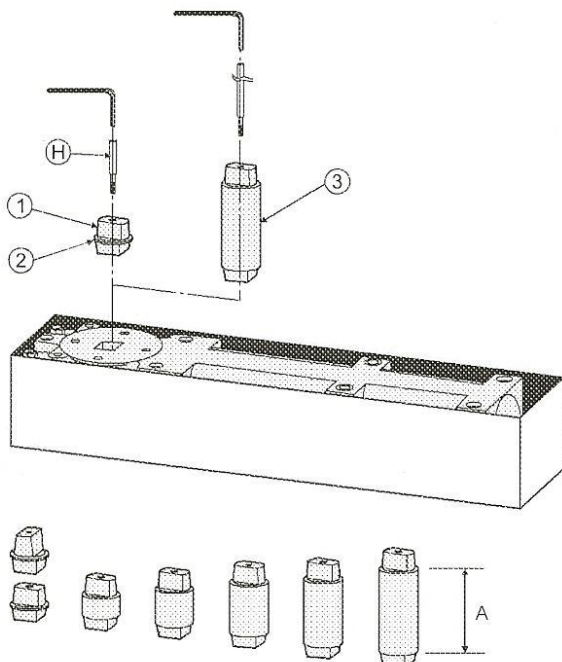
Double Acting Door

Floor closer should be positioned in center of cement box.



Left-Hand Door (Right-Hand Reverse Bevel)

Loosen mounting screws **A** and **E**
 Move closer in cement box as illustrated.



Exchange of spindle insert

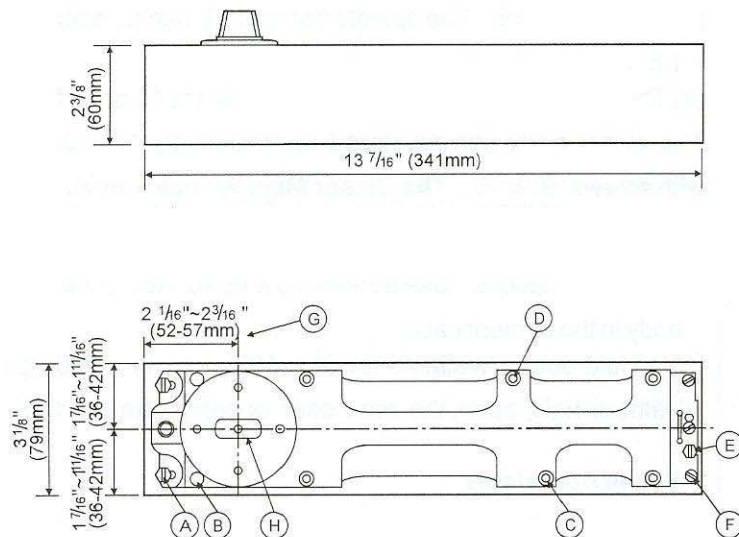
Remove screw **H** with allen ranch (5mm) and remove standard spindle insert **1**.

Push dust cap **2** into groove of extended spindle inset **3**. Fit extended spindle into closer and tighten securely.

Interchangeable Spindles

CAT. NO	COLLAR (A) HEIGHT	DOOR CLEARANCE
CRL9040S3	*1/8" (3 mm)	5/16" (8 mm)
CRL9040S8	5/16" (8 mm)	1/2" (13 mm)
CRL9040S13	1/2" (13 mm)	11/16" (17 mm)
CRL9040S18	3/4" (18 mm)	15/16" (24 mm)
CRL9040S23	7/8" (23 mm)	1-1/16" (27 mm)
CRL9040S28	1-1/8" (28 mm)	1-5/16" (33 mm)
CRL9040S33	1-5/16" (33 mm)	1-7/16" (37 mm)

*Standard Spindle Supplied with Closer



A = Mounting Screws

B = Height Adjustment Screws

C = Latching Speed Valve

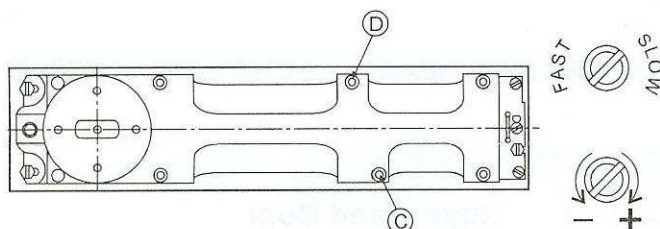
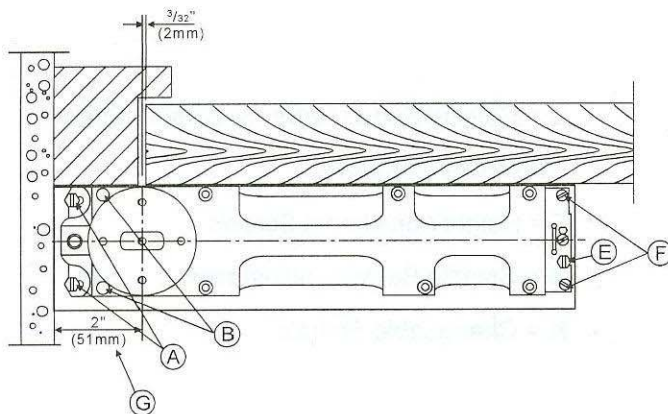
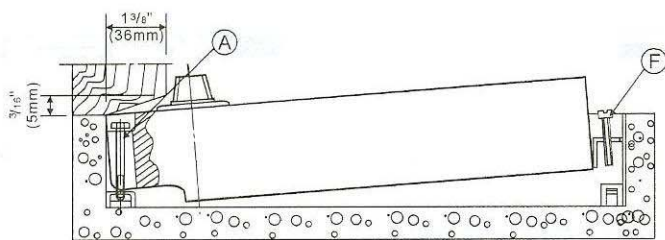
D = Closing Speed Valve for Closing Speed

E = Mounting Screws

F = Height Adjustment Screws

G = Spindle Backset Adjustment

H = Changeable Spindle



Installation

(1) The cement case must be installed to allow for a pivot center-line dimension of 2-3/4" (70mm) backset from finished door jamb. The spindle backset **G** can be adjusted + 1/8" (3mm) within the cement case.

(2) The cement case top must be flush with the finished floor. The closer body can be raised approximately 1/8" (3mm) with screws **B** & **F**. **The Closer Must Remain Level.** Use the appropriate spindle size to achieve the desired clearance.

(3) Adjust the closer body as required for center-hung or offset applications. Use Screws **A** & **E** to secure the closer body in the cement case.

(4) Hold-open: Available for 90°, 105° or no hold open. Without hold open, the max door opening can be 180°.

Speed Adjustable

1) **Valve D:** Closing speed adjustable between 180° ~ 15° angle (If no hold open)

1) **Valve C:** Closing speed adjustable between 15° ~ 0° angle